



Kirby Morgan Dive Systems, Inc.®

1430 Jason Way Santa Maria, California 93455

Phone: 805/928-7772 Fax: 805/928-0342

www.KirbyMorgan.com email: kmksi@KirbyMorgan.com

Part #525-225 SL 27® Rear Weight Kit

Part #	Description	Qty
530-078	Screw	2
530-040	Washer	2
560-100	Rear Weight, SL 27	1

Drilling template

Tools Required:

Drill, ¼" (6 mm) Capacity

¼" (6 mm) Drill Bit

Flat Blade Screwdriver

Scissors

Marking Pen

Dow Corning® 732 Multi-Purpose Sealant or Equivalent

Acetone



Mounting Instructions on Reverse



Kirby Morgan Dive Systems, Inc.®

1430 Jason Way Santa Maria, California 93455

Phone: 805/928-7772 Fax: 805/928-0342

www.KirbyMorgan.com email: kmdsi@KirbyMorgan.com



Procedure:

1. Place the weight against the back of the helmet with the long axis parallel to the neck ring
2. Center and position the lowest point in the diamond shaped weight approximately 2 ¼ inches (57 mm) up from neck ring. (**NOTE:** The weight will fit only one way. It may be necessary to turn the weight 180 degrees for a proper fit.) Move the weight around slightly until exact fit is found.
3. Using a marking pen, mark the position of the top and bottom points of the weight on the helmet shell and mark the weight as to which point is the top.
4. Cut out the drilling template printed on this sheet. Punch holes through the two dots.



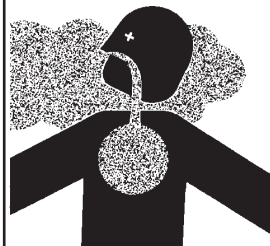
5. Position template using the marks on the helmet shell and mark the location for the two holes using a marking pen.

6. Drill a ¼ inch (6 mm) hole through the helmet at each of the two marks made from the drilling template.

CAUTION

Be sure to remove all drilling debris from inside the helmet

WARNING



Avoid breathing fumes from acetone and use in a well ventilated area. Breathing fumes can lead to nervous system damage, unconsciousness, and death.

7. Clean the weight mounting area of the helmet and the back side of the weight with mineral spirits, lacquer thinner or Acetone. **DO NOT CLEAN/REMOVE DRILLING TEMPLATE MARKS.**

8. Apply silicone sealant **around the two screw holes on the weight** and along the leading edge of the weight as shown. Be sure to also **apply sealant into the holes** where the screws attach to the weight.

9. Place the weight, top up against the helmet, aligning with the marks and attach securely with the screws and washers provided.

10. Wipe off any excess silicone sealant.

