



Kirby Morgan Dive Systems, Inc.®

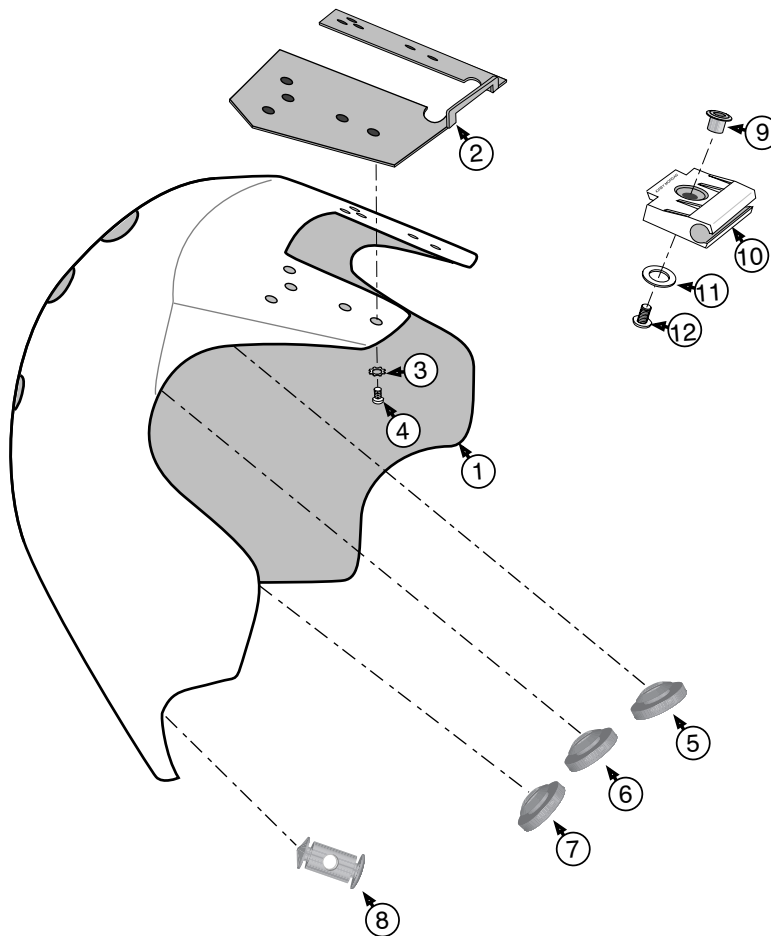
1430 Jason Way Santa Maria, California 93455

Phone: 805/928-7772 Fax: 805/928-0342

www.KirbyMorgan.com email: kmdsi@KirbyMorgan.com

Part #300-010 EXO Mask Hard Shell Kit

Loc. #	Part #	Description	Qty
1	320-096	Hard Shell	1
2	345-015	Hinge Plate Assembly	1
3	530-406	Star Washer	6
4	330-026	Mount Screw	6
5	310-098	Grommet	2
6	310-097	Grommet	2
7	310-099	Grommet	2
8	310-101	Attachment Plug	2
9	350-040	"T" Nut	1
10	360-005	Mount Block	1
11	330-210	Washer	1
12	330-020	Screw	1



*Place this sheet with
your EXO manual and
refer to the blowpart for
replacement parts.*

Kirby Morgan Dive Systems, Inc.®

1430 Jason Way Santa Maria, California 93455

Phone: 805/928-7772 Fax: 805/928-0342

www.KirbyMorgan.com email: kmdsi@KirbyMorgan.com



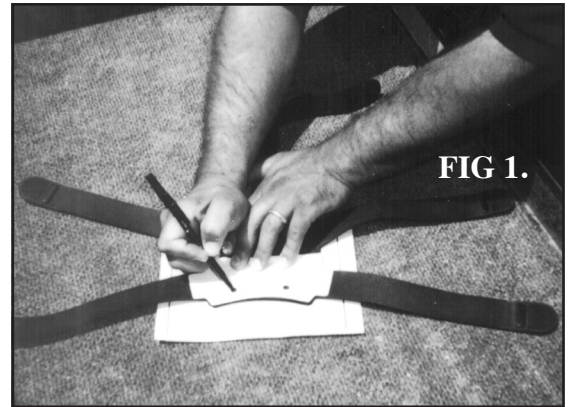
Procedure for incorporating EXO Hard Shell

- 1) Remove the spider from the mask.
- 2) Remove: Top ‘T’ Nut, Screw, Washer, Buckle Cap & Buckle. Discard the old “T” Nut, Screw & Washer. Save the old Buckle Cap for a Spare.

3) Re-Install the top buckle using the Stainless Steel Kirby Morgan mount block in place of the old buckle cap, using the new “T” Nut, Screw & Washer.

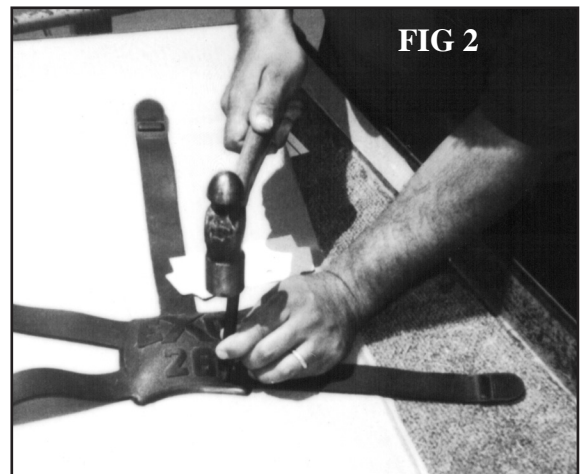
4) On the included template sheet, cut out the top template as instructed.

5) Place the spider with the EXO lettering facing UP, on top of the alignment template and press it flat so the curved edge lines up with the template. Place the hole marking template on top of the spider, again aligning the curved edge. Mark the hole position, FIG 1.



6) Punch 2 holes for the attachment plugs using a minimum of .250” (6.35mm) to a maximum of .281” (7.14mm), punch on the hole markings. FIG 2.

7) Install the 2 attachment plugs to the spider, by stretching the spider to enlarge the punched holes. This will allow extra clearance and make the installation easier. **DO NOT USE ANY LUBRICANT WHEN DOING THIS. IT MAY ALLOW THE PLUG TO BE PULLED OUT TOO EASILY AFTER BEING INSTALLED!** The flat end of the plug goes through the spider so it will rest against the back of the head. The conical end will be installed through the hole in the Hard Shell.



8) Re-Install the spider onto the mask.

9) The Hard Shell is attached and removed by aligning the flats on the bar of the hinge plate assembly, with the open slot on the front of the mount block. Dropping the shell down to the proper position will now “LOCK” the top in place. Push the conical end of the attachment plugs, through the inside of the shell to the outside. If the conical end is pushed through at an angle to the hole, it will make this easier. When removing the Hard Shell, **LEAVE THE ATTACHMENT PLUGS INSTALLED TO THE SPIDER.** It will make reinstalling easier.

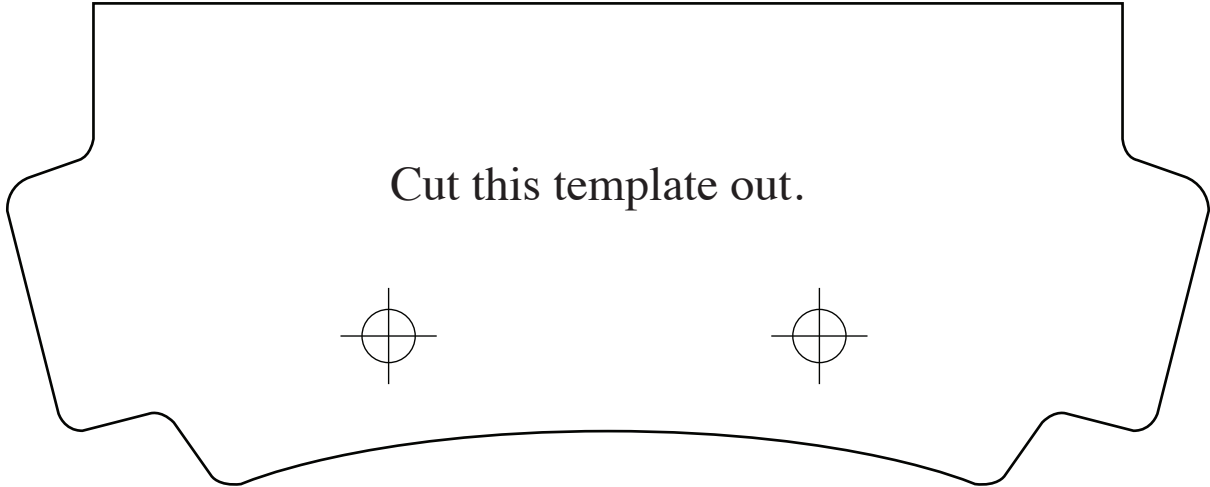


Kirby Morgan Dive Systems, Inc.®

1430 Jason Way Santa Maria, California 93455

Phone: 805/928-7772 Fax: 805/928-0342

www.KirbyMorgan.com email: kmdsi@KirbyMorgan.com



* Cardstock recommended for printing template *

