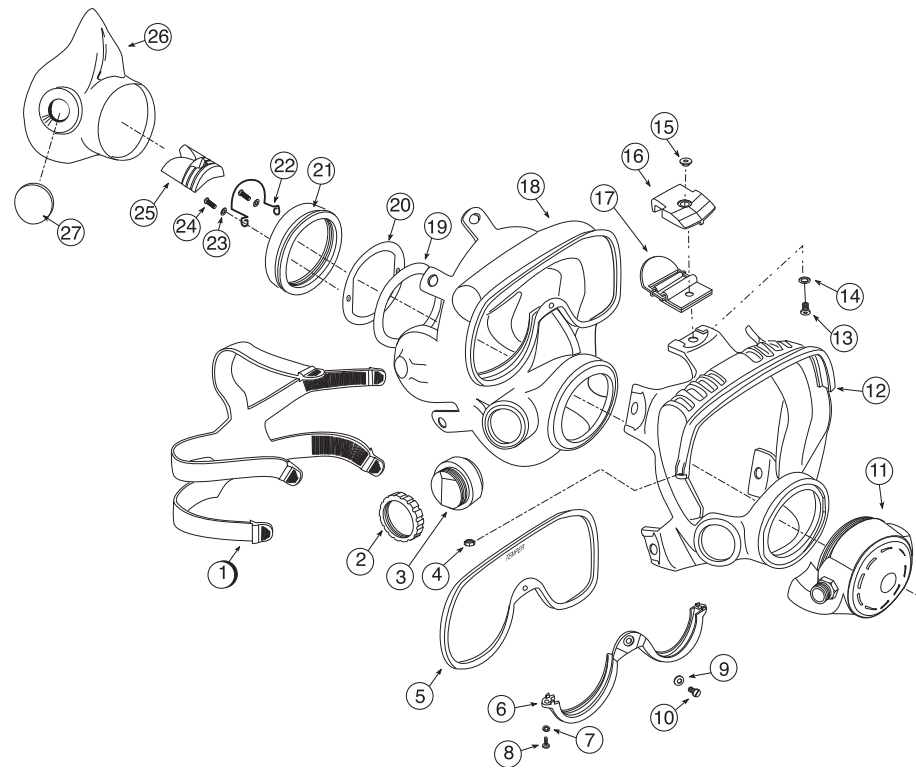


Kirby Morgan EXO BR Balanced Regulator Full Face Mask P/Ns 300-036, 300-037, 300-038

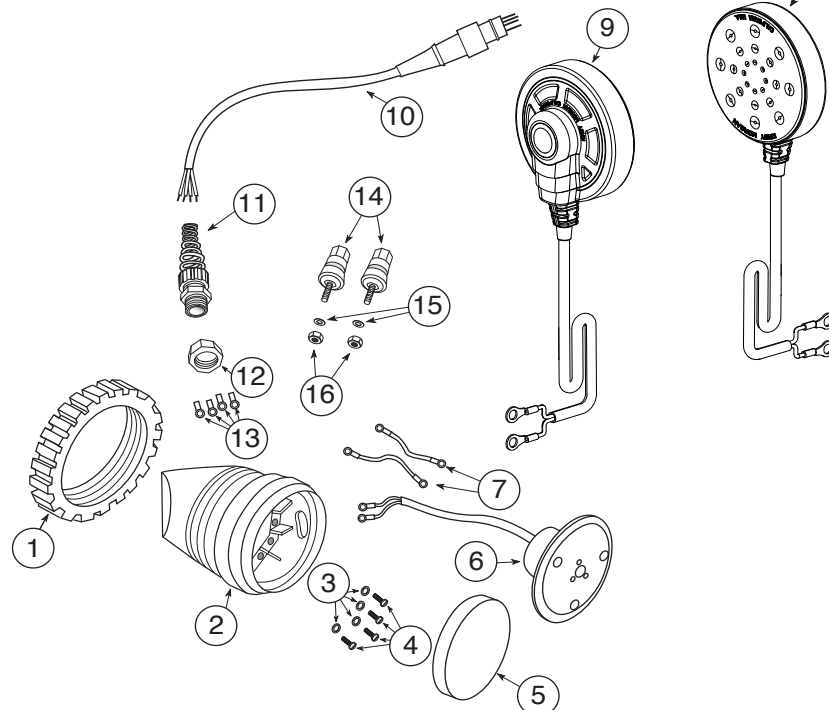
Location #	Part #	Description
1	310-025	Spider
2	320-026	Comm Mount Nut
3	305-020	Module w/screws
4	330-105	Nut
5	365-002	Face Lens Assembly
6	320-028	Lens Clamp, Yellow
7	330-205	Washer
8	330-005	Screw
9	330-506	Washer
10	330-010	Screw
11	325-772	Regulator Assembly
12	320-016	Frame, EXO BR, Yellow
13	330-020	Screw
14	330-210	Washer
15	350-040	T-Nut
16	320-021	Buckle Cap, Yellow
17	345-010	Buckle Assembly, EXO 26 Mask
18	310-001	Mask Seal
19	320-040	Reg. Mount Washer
20	340-015	Mount Ring, EXO BR
21	350-047	Mount Nut, Regulator, BR
22	330-900	Wire Retainer
23	330-515	Washer
24	330-040	Screw
25	310-357	Equalizer, EXO
26	Order P/N 325-055	Oral Nasal Mask w/ Tie Wraps
27	320-001	Plug, EXO Oral Nasal Microphone



Balanced Regulator Assembly, P/N 305-040 (Order 325-772)

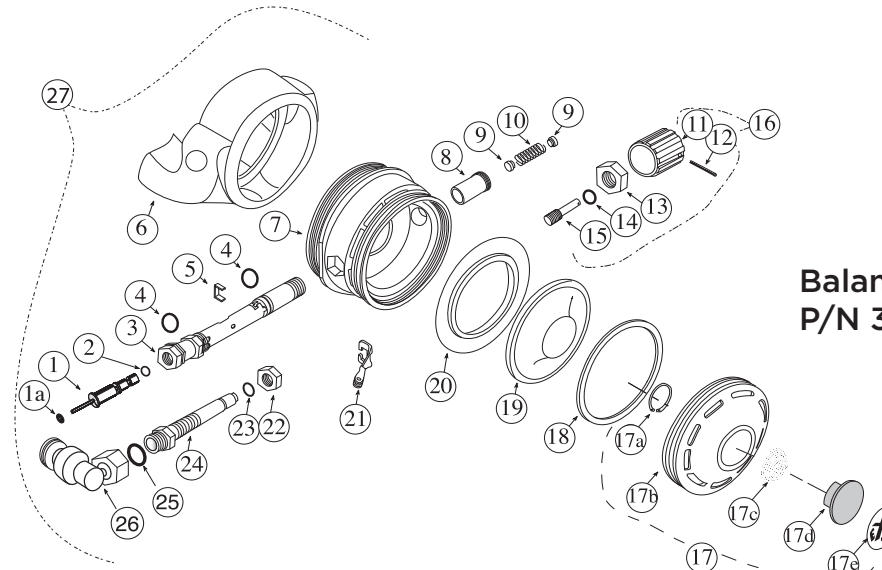
Location #	Part #	Description	Location #	Part #	Description
1a	310-070	Seat, Inlet Valve	17	305-060	Cover Assembly, EXO BR
1	305-057	Inlet Valve Assembly, EXO-BR, Rex	17a	535-905	Retaining Clip
2	310-006	O-ring	17b	350-075	Regulator Cover
3	350-143	Main Tube	17c	535-810	Spring, Purge Button
4	310-013	O-ring	17d	520-017	Purge Button
5	340-004	Horseshoe	17e	320-080	Purge Button Sticker, BR
6	310-020	Exhaust Whisker	18	320-030	Washer
7	320-041	Regulator Body	19	510-553	Diaphragm
8	350-035	Sleeve	20	310-065	Exhaust Valve
9	350-065	Spacer	21	545-038	Roller Lever Arm Assembly
10	535-910	Spring	22	350-020	Nut, Adjustment
11	320-035	Knob, Adjustment	23	310-007	O-ring
12	530-601	Retaining Pin	24	350-042	Nipple Tube, BR
13	350-025	Packing Nut	25	510-010	O-ring
14	510-011	O-ring	26	305-017	Hi Flow air inlet swivel. (w/25)
15	350-052	Shaft, Adjustment, EXO BR	27	325-772	Regulator Assembly, Balanced, BR
16	305-045	Reg Adjustment Assem.			

Optional Communications Assemblies



Optional Communications Assemblies

Location #	Part #	Description
1	320-026	Comm Mount Nut
2	305-020	Module w/screws w/3 & 4
3	320-023	Comm Module, drilled for posts
4	320-024	Comm Module, drilled for W.P.C.
5	330-035	Washer
6	330-030	Screw
7	510-630	Cover, Comm. Module
8	515-020	Microphone, EXO BR
9	515-090	Earphone Speaker, post 2011
10	510-842	Earphone Covers, post 2011
11	515-055	Wiring Harness, Posts
12	315-016	Earphone Left, EXO
13	315-015	Earphone Right, EXO
14	515-045	W.P. Connector, (Male) 4-Pin
15	315-005	Pigtail
16	350-070	Mount Nut
17	515-049	Single Wire Terminal
18	315-020	Comm Posts
19	530-525	Washer
20	530-308	Hex Nut
Complete Assemblies		
	315-210	Comm. Assembly w/Posts, Std/BR
	315-215	Comm. Assembly Male W.P. Connector, Std/BR



Balanced Regulator Assembly, P/N 305-040 (Order 325-772)

CAUTION

Use only Kirby Morgan original replacement parts. The use of other manufacturers' parts will interfere with the performance characteristics of your life support equipment and may jeopardize your safety. Additionally, any substitutions will void any warranties offered by KMDSI. When ordering spares, always insist on Kirby Morgan original parts.



Kirby Morgan Dive Systems, Inc.® 1430 Jason Way, Santa Maria, CA 93455

Phone: 805/928-7772 Fax: 805/928-0342

www.KirbyMorgan.com e-mail: kmdsi@KirbyMorgan.com