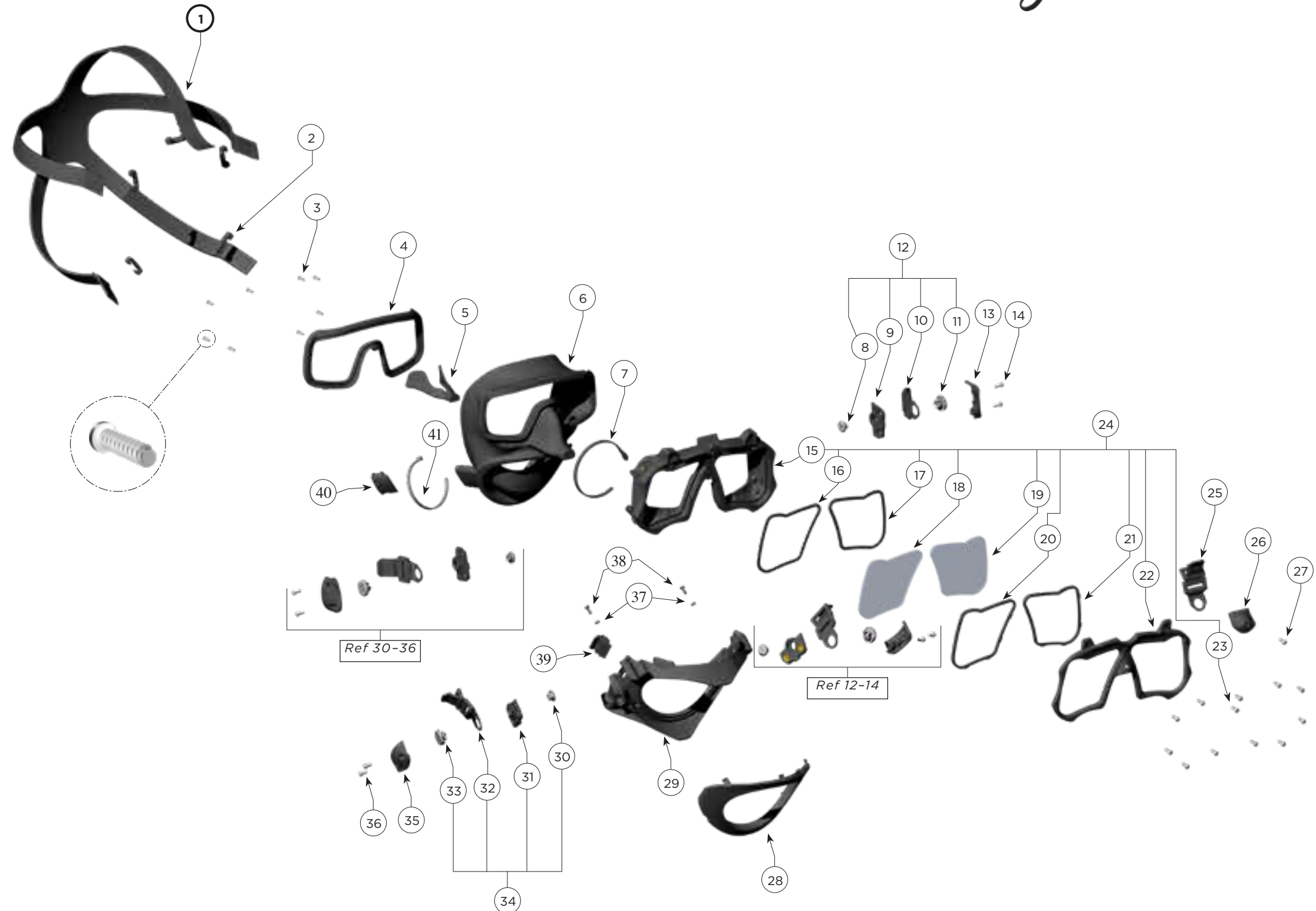


Mask, M-48 MOD-1, No Pod P/N 805-175

Location #	Part #	Description	
1	810-007	Mask Strap	
2	820-225	Strap Keeper	
3	830-050	Screw	
4	820-235	Skirt Lens Body Retainer	
5	805-130	Nose Pinch Assembly	
6	810-017	Mask Skirt	
7	820-091	Low Profile Tie Wrap	
8	820-025	Lock Plug	Buckle
9	820-227	Buckle Mount Plate, Left	Assembly Can
10	805-028	Buckle Assembly, Non-Mag	Be Ordered Complete
11	820-026	Buckle Tab Hold Plug	Location # 12
12	805-153	Buckle Assembly, Non-Mag, Metal/Plastic, Left	
13	820-233	Buckle Cap, Left	
14	830-014	Screw	
15	820-220	Lens Body	
16	810-150	Lens Gasket, Right	
17	810-151	Lens Gasket, Left	
18	865-010	Lens, Right	
19	865-011	Lens, Left	
20	820-223	Lens Keeper, Right	
21	820-224	Lens Keeper, Left	
22	820-238	Lens Keeper Retainer	
23	830-011	Screw	
24	805-140	Lens Body Assembly	
25	805-028	Buckle Assembly, Non-Mag	
26	820-230	Buckle Cap, Top	
27	830-011	Screw	
28	820-041	Jaw Frame Retainer	
29	820-036	Jaw Frame	
30	820-025	Lock Plug	Buckle
31	820-226	Buckle Mount Plate, Right	Assembly Can
32	805-028	Buckle Assembly, Non-Mag	Be Ordered Complete
33	820-026	Buckle Tab Hold Plug	Location # 34
34	805-152	Buckle Assembly, Non-Mag, Right	
35	820-232	Buckle Cap, Right	
36	830-014	Screw	
37	330-205	Washer	
38	830-011	Screw	
39	820-045	Pod Catch	
40	820-155	Comm Port Plug	
41	520-038	Tie Wrap	



Option Available

805-015 Scuba Pod (not shown this BlowApart)

NOTE: Although some components herein, are labeled, "Non-Mag", That claim is based on tests performed at initial production startup of this mask, and NOT based on any ongoing testing. If this product is to be used where the equipment needs to have a low, or non magnetic signature, it is the responsibility of the end user to apply any specialized testing, to determine if the equipment will pass any needed, low or non magnetic requirements.



Kirby Morgan Dive Systems, Inc.® 1430 Jason Way, Santa Maria, CA 93455

Phone: 805/928-7772 Fax: 805/928-0342

www.KirbyMorgan.com e-mail: kmdsi@KirbyMorgan.com