

Kirby Morgan 77 Helmet

P/N 500-090 / 500-091

Location #	Part #	Description
1	510-575	Nose Block Pad
2	545-015	Nose Block Device <i>Includes location #1</i>
3	520-020	Valve Body
4	510-550	Valve, Oral Nasal
5	510-743	Oral Nasal Mask
6	530-058	Screw
7	330-405	Washer
8	540-569	Handle, Helmet
9	530-059	Screw
10	510-795	Grip, Handle
11	430-075	Washer
12	530-052	Screw
13	505-759	Handle Assembly
14	560-517	Helmet Shell, Stainless Steel
15	505-753	Airtrain Assembly, Stainless Helmet
16	550-571	Sleeve
17	530-083	Screw
18	550-574	Sleeve
19	530-535	Washer
20	530-415	Washer
21	530-317	Nut
22	540-563	Port Retainer
23	530-059	Screw
24	550-566	Adapter
25	530-052	Screw
26	550-062	Knob, Nose Block
27	555-180	Packing Nut, Nose Block
28	510-008	O-ring
29	550-577	Nose Block Guide
30	505-738	Port Retainer Assembly
31	510-010	O-ring
32	520-004	Face Port
33	510-260	O-ring, View Port
34	550-097	Large Port Plug Body
35	510-029	O-ring
36	510-481	O-ring
37	550-043	Plug
38	320-026	Comm. Mount Nut

Location #	Part #	Description
39	505-089	Large Port Plug Assembly <i>Includes location #s 34-38</i>
40	550-372	Regulator Mount Nut
41	510-741	Valve, Water Dump
42	320-040	Regulator Mount Washer
43	530-145	Lock Nut
44	530-527	Washer
45	510-403	Gasket, Pod
46	560-516	Regulator Mount Pod
47	430-134	Washer
48	530-089	Screw
49	530-086	Screw
50	505-278	REX Regulator Assembly <i>Purchase 525-774</i>
51	560-300	Zinc Whisker Anode
52	540-015	Kidney Plate (pre 2013)
53	550-586	Spacer, Whisker
54	530-070	Screw
55	530-145	Lock Nut
56	530-086	Screw
57	530-032	Screw
58	530-035	Screw
59	530-546	Washer for Swing Catch
60	550-061	Spacer
61	540-086	Swing Catch
62	520-167	Teflon® Washer for Swing Catch
63	535-825	Spring, Swing Catch
64	550-122	Spring Spacer
65	530-045	Screw
66	505-748	Chin Strap Assembly with Snaps
67	530-028	Lock Nut
68	505-755	Locking Collar Assembly, S.S.
69	530-027	Hinge Bolt
70	520-165	Washer
71	530-545	Washer
72	505-746	Neck Ring Assembly, Medium, S.S.
73	530-037	Screw
74	505-742	Earphone Retainer Assembly

Location #	Part #	Description
75	505-740	Snap Tab Assembly, S.S.
76	505-110	Sealed Pull Pin Assembly
77	530-059	Screw
78	540-039	Front Stand Off
79	525-116	Front Stand Off Kit <i>(2 each of Loc. # 77 and 78)</i>
80	530-015	Screw
81	320-026	Comm. Mount Nut
82	515-018	Earphone, Right, 9"
83	515-019	Earphone, Left, 15.5"
84	515-029	Microphone Assembly
85	515-024	Comm. Assembly w/MWP
86	515-023	Comm. Assembly w/Posts
87	505-732	Side block Assembly
88	520-033	O-ring, Teflon®
89	555-167	47/77 Bent Tube
90	510-012	O-ring
91	555-168	Bent Tube Assembly w/O-rings
92	520-038	Tie Wrap
93	560-304	Zinc Sleeve Anode
94	510-683	Chin Cushion Assembly
	510-639	Chin Cushion Bag
95	510-837	Head Cushion Foam Spacer Assembly <i>(Order P/N 525-745)</i>
	510-836	Head Cushion Foam Spacer Bag
96	510-754	Head Cushion Assembly
	510-722	Head Cushion Bag

⚠ CAUTION

Use only Kirby Morgan original replacement parts. The use of other manufacturers' parts will interfere with the performance characteristics of your life support equipment and may jeopardize your safety. Additionally, any substitutions will void any warranties offered by KMDSI. When ordering spares, always insist on Kirby Morgan original parts.

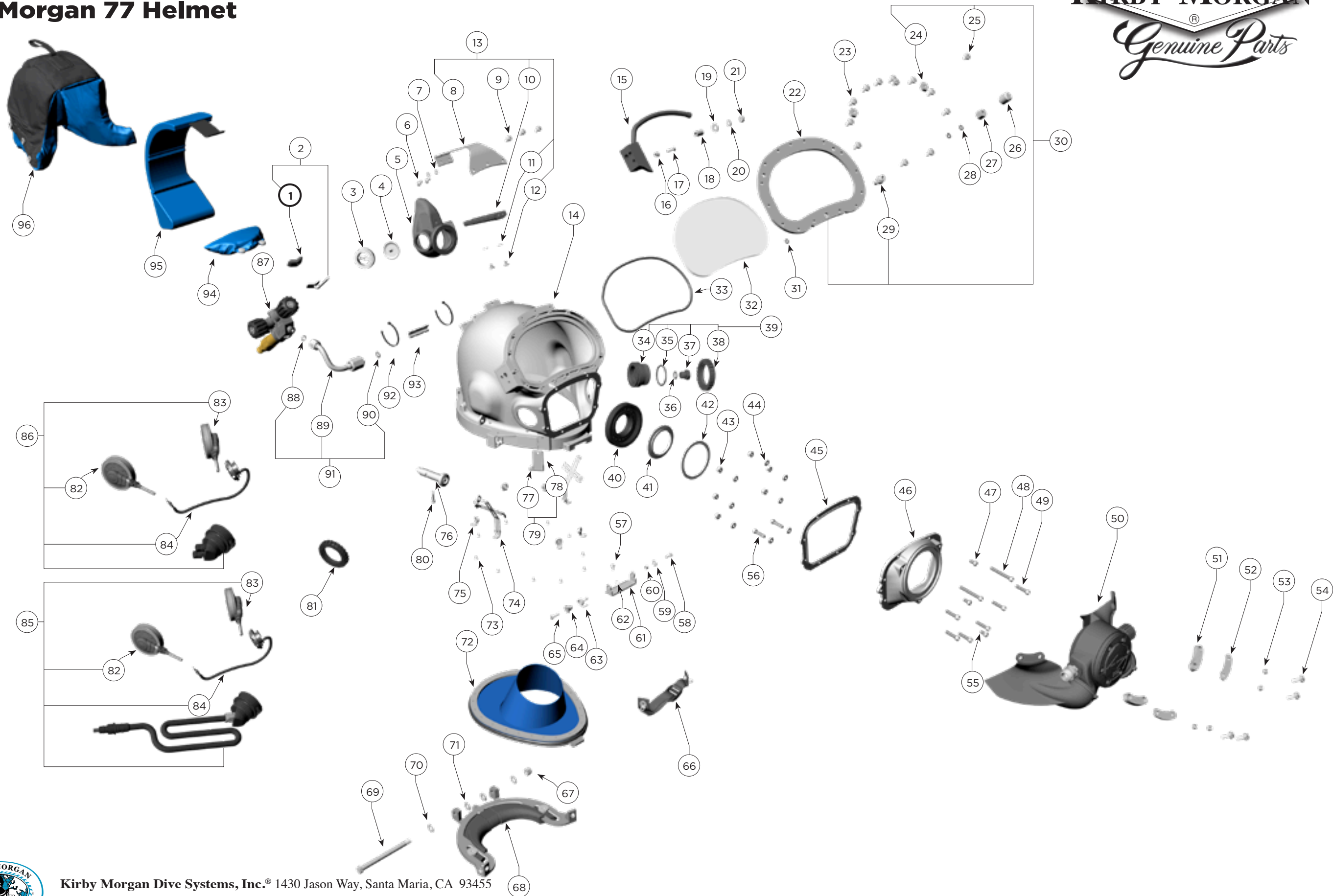


Kirby Morgan Dive Systems, Inc.® 1430 Jason Way, Santa Maria, CA 93455

Phone: 805/928-7772 Fax: 805/928-0342

www.KirbyMorgan.com e-mail: kmdsi@KirbyMorgan.com

Kirby Morgan 77 Helmet



Kirby Morgan Dive Systems, Inc.® 1430 Jason Way, Santa Maria, CA 93455

Phone: 805/928-7772 Fax: 805/928-0342

www.KirbyMorgan.com e-mail: kmdsi@KirbyMorgan.com