

SuperLite® 27® Helmet 500-040 / 500-041

Location #	Part #	Description
1	510-750	SL 27® Head Cushion Assembly
	510-722	Head Cushion Bag
2	510-837	Head Cushion Foam Spacer Assembly (Order P/N 525-745)
	510-836	Head Cushion Foam Spacer Bag
3	510-683	Chin Cushion Assembly
	510-639	Chin Cushion Bag
4	505-024	Side Block Assembly
	505-025	Side Block Assembly, Brass
5	520-033	O-ring, Teflon®
6	555-154	Bent tube Assembly, No O-rings (Order P/N 555-155)
7	510-012	O-ring
8	555-155	Bent Tube Assembly w/O-rings
9	530-070	Screw
10	530-540	Washer
11	505-105*	Helmet Shell, SL 27 with Ring
12	530-078	Screw
13	530-540	Washer
14	525-225	Rear Weight, SL 27 (sold separately)
15	530-070	Screw
16	560-108	Handle, SL 27
	560-107	Handle, Brass, SL 27
17	560-115	Plaque, SL 27
18	560-106	Handle with Plaque, SL 27
	560-105	Handle with Plaque, Brass, SL 27
19	530-045	Screw
20	510-762	Air Train Gasket
21	530-050	Screw
22	530-535	Washer
23	530-415	Washer, Lock
24	530-317	Nut
25	545-016	Air Train
26	530-535	Washer
27	530-317	Nut
28	560-081	Weight, Port Side, SL 27
	560-082	Weight, Port Side, Brass, SL 27
29	530-062	Screw
30	530-052	Screw
31	530-035	Screw
32	550-062	Knob, Nose Block
	550-252	Knob, Nose Block, Brass
33	555-180	Packing Nut
	555-190	Packing Nut, Brass
34	510-008	O-ring
	550-116	Nose Block Guide
35	550-249	Nose Block Guide, Brass

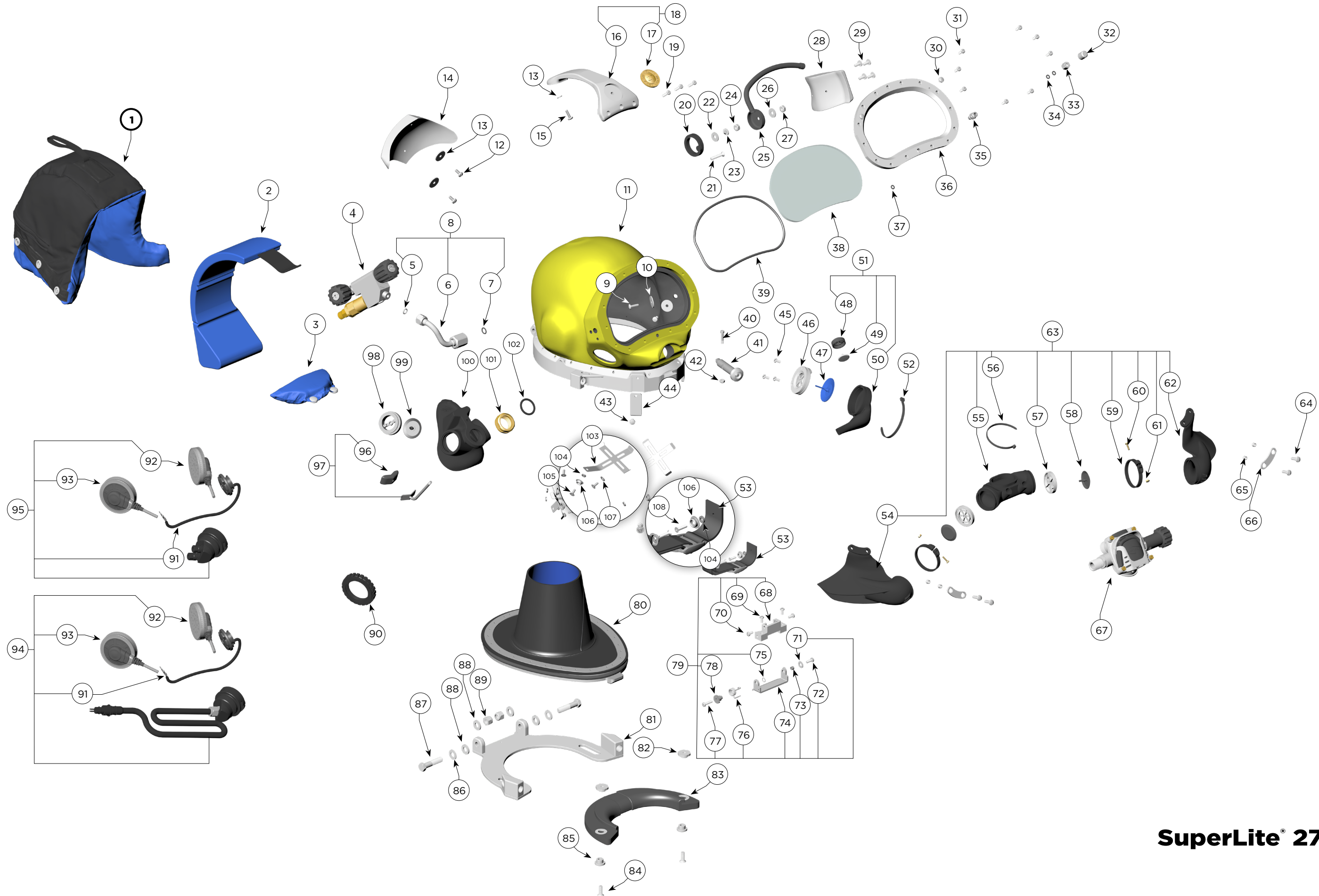
Location #	Part #	Description
36	560-070	Port Retainer, w/#35
	560-071	Port Retainer, Brass, w/#35 Brass
37	510-010	O-ring
38	520-004*	Face Port
39	510-260	O-ring, View Port
40	530-015	Screw
41	505-110	Sealed Pull Pin
42	530-307	Lock Nut
43	530-059	Screw
44	540-039	Front Stand Off
45	530-032	Screw
46	550-350	Water Dump Body
47	510-557	Water Dump Valve, SL 27
48	820-120	Valve Body, Purge
49	810-025	Valve, Purge
50	510-780	Water Purge Deflector
51	505-726	Water Purge Deflector Assembly
52	520-042	Tie Wrap
53	505-111	Chin Strap Assembly (Order 525-716 Kit)
54	510-786	Starboard Whisker Wing
55	510-759	Tri Valve Exhaust Main Body
56	520-042	Tie Wrap
57	520-200	Whisker Exhaust Valve Insert
58	510-776	Exhaust Valve
59	520-118	Tri/Quad Valve Whisker Clamp
60	530-008	Brass Screw
61	530-009	Brass Nut
62	510-787	Port Whisker Wing
63	505-729	Tri Valve Assembly, SL 27 (Order 525-755)
64	530-045	Screw
65	550-061	Spacer
66	540-015	Kidney Plate
67	505-455	455 Balanced Regulator (Order P/N 525-765)
68	550-290	Swing Catch Mount
69	530-032	Screw
70	530-035	Screw
71	530-546	Washer for Swing Catch
72	530-035	Screw
73	550-061	Spacer
74	540-086	Swing Catch
75	520-167	Teflon® Washer for Swing Catch
76	535-825	Spring, Swing Catch
77	530-045	Screw
78	550-122	Spring Spacer

Location #	Part #	Description
79	505-013	Swing Catch Assembly
80	505-100	Neck Ring Assembly, SL 27 (neoprene) Medium
81	560-111	Locking Collar
82	550-113	Adjustment Nut, Neck Pad
83	520-156	Neck Pad, SL 27
84	530-064	Screw
85	550-045	T-Washer
86	530-545	Washer
87	530-302	Hinge Bolt
88	520-165	Washer (Hard Plastic)
89	530-028	Lock Nut
90	320-026	Comm. Mount Nut
91	515-029	Microphone Assembly
92	515-019	Earphone, Left, 15.5"
93	515-018	Earphone, Right, 9"
94	515-024	Comm. Assembly w/MWP
95	515-023	Comm. Assembly w/Posts
96	510-575	Nose Block Pad
97	545-070	Nose Block, SL 27 Includes location #96
98	520-020	Valve Body
99	510-550	Valve, Oral Nasal
100	510-724	Low Volume Oral Nasal
	510-569	Oral Nasal Mask, Small (sold separately)
101	550-081	Nut, Regulator Mount
102	510-490	O-ring
103	540-054	Earphone Retainer
104	530-519	Washer
105	530-018	Screw
106	530-702	Snap
107	530-527	Washer
108	530-031	Screw

⚠ CAUTION

Use only Kirby Morgan original replacement parts. The use of other manufacturers' parts will interfere with the performance characteristics of your life support equipment and may jeopardize your safety. Additionally, any substitutions will void any warranties offered by KMDSI. When ordering spares, always insist on Kirby Morgan original parts.

* Denotes a critical component



SuperLite® 27® Helmet