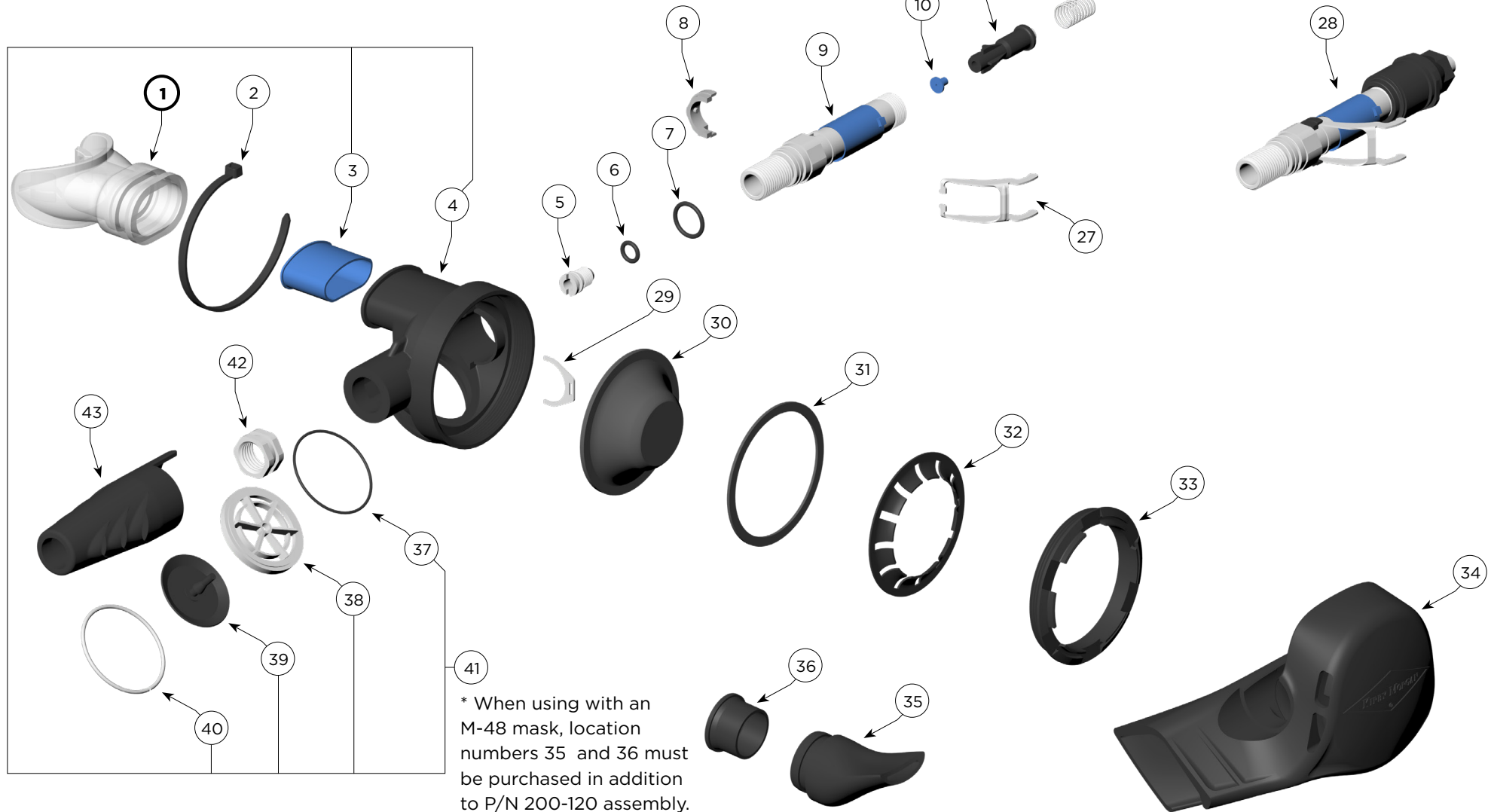
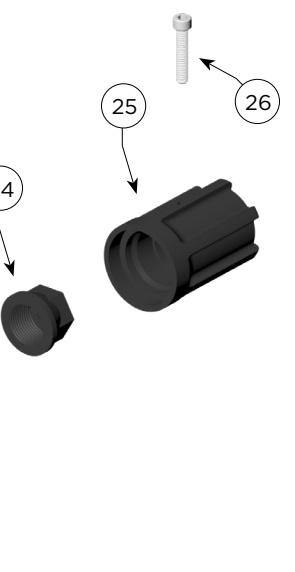


Balanced Scuba Regulator Assembly P/N 200-120

Location #	Part #	Description
1	310-278	Mouthpiece
2	520-039	Tie Wrap
3	220-086	Flow Baffle
4	220-041	Regulator Housing
5	550-163	Adjustable Nipple (Large Bore)
6	510-010	O-ring
7	510-015	O-ring
8	220-056	Bearing Clip
9	250-059	Main Tube
10	210-060	Valve Seat
11	220-050SS	Inlet Valve, Stainless Steel Tube
12	205-020	Inlet Valve Assembly
13	235-015	Spring
14	210-055	O-ring, Balanced
15	250-065	Washer
16	550-549	Balance Spacer



* When using with an M-48 mask, location numbers 35 and 36 must be purchased in addition to P/N 200-120 assembly.



Location #	Part #	Description
17	510-018	O-ring
18	250-012	Adjustment Guide Insert
19	220-079	Spring Seat
20	210-056	O-ring
21	250-013	Adjustment Shaft
22	220-080	Spacer
23	220-031	Thrust Washer
24	220-021	End Cap Packing Nut
25	220-085	Adjustment Knob
26	230-017	Adjustment Knob Screw
27	240-008	Lever Arm
28	205-030	Main Tube Assembly (Includes loc. # 5-24 and 27)
29	240-009	Packing Lock Clip
30	210-041	Diaphragm
31	220-032	Diaphragm Washer
32	220-034	Diaphragm Surge Dam
33	220-033	Diaphragm Retainer Ring
34	220-042	Regulator Shroud/Exhaust Cover
35	*220-087	Purge Tube, Balanced
36	*220-057	Purge Sleeve, Balanced
37	510-019	O-ring
38	520-022	Exhaust Valve Insert
39	510-776	Exhaust Valve
40	540-012	Retaining Ring
41	205-025	Regulator Body Assembly
42	250-058	Jam Nut
43	220-088	Hose Protector