



Kirby Morgan Dive Systems, Inc.®

1430 Jason Way Santa Maria, California 93455

Phone: 805/928-7772 Fax: 805/928-0342

www.KirbyMorgan.com email: kmgsi@KirbyMorgan.com

Part #525-365 SL 27 Soft Goods Overhaul Kit with SuperFlow® 350 Regulator

PART #	DESCRIPTION	QTY	PART #	DESCRIPTION	QTY
310-003	O-ring	1	510-580	Seat, Inlet Valve	1
510-008	O-ring	2	510-776	Exhaust Valve	2
510-010	O-ring	2	520-024	Packing	1
510-011	O-ring	1	520-030	Washer	1
510-012	O-ring	1	520-031	Washer	1
510-014	O-ring	1	520-032	Washer	1
510-015	O-ring	2	520-033	O-ring, Teflon®	1
510-029	O-ring	1	520-042	11" Tie-Wrap	4
510-260	O-ring, View Port	1	520-167	Teflon® Washer for Swing Catch	1
510-401	Gasket	1	525-032	Kit, Whisker Clamp Replacement	1
510-450	O-ring, Neck Ring	1	525-330	Kit, One-Way Valve	1
510-481	O-ring	1	530-028	Lock Nut	1
510-483	O-ring	1	530-303	Lock Nut	1
510-490	O-ring	1	530-601	Retaining Pin	1
510-550	Valve, Oral Nasal	1	540-095	Packing Washer	1
510-552	Exhaust Valve	1	810-025	Valve, Purge	1
510-553	Diaphragm	1			
510-557	Water Dump Valve, 27	1			

***See next page for O-ring Identification**

Equipment used for air diving or diving with oxygen mixtures containing **LESS than 40% oxygen** can be lubricated with food-grade silicone, such as Molykote® 111 or equivalent. DO NOT mix types of lubes in the regulators. At a minimum, all helmet or BandMask® O-rings should be replaced at least once a year in accordance with the A2.1 checklist for the helmet or mask being inspected. During daily and monthly maintenance, O-rings and valves may be reused if no damage or deformation is found. O-rings and valves may require replacement more often than yearly if helmet or mask use is extreme, or if the helmet or mask is used in waters containing oil or chemical contamination. Daily cleaning and inspections, as well as the monthly inspection (A2.2 checklist), will more accurately identify the need than simply counting hours between overhauls. Store spare O-rings, valves, and soft goods in a cool, dark, dry place. Avoid prolonged exposure to temperatures above 90 °F (32 °C) and/or to ultraviolet rays. Do not lubricate exhaust valves and diaphragms. Lubricating valves can cause dirt to adhere, leading to leakage.



Kirby Morgan Dive Systems, Inc.®

1430 Jason Way Santa Maria, California 93455

Phone: 805/928-7772 Fax: 805/928-0342

www.KirbyMorgan.com email: kmdsi@KirbyMorgan.com



310-003

1. Low Pressure Side Block Port Plug (Bottom) (Qty. 1)



510-008

1. Nose Block Shaft (Qty. 2)



510-010

1. Nose Block Guide Seal (Qty. 1)
2. Steady Flow (Qty. 1)



510-011

1. Regulator Adjustment Knob (Qty. 1)



510-012

1. Bent Tube (Qty. 1)



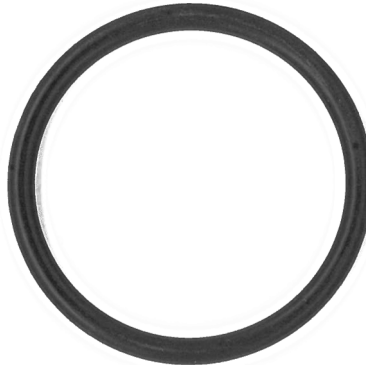
510-014

1. Regulator Inlet Nipple (Qty. 1)



510-015

1. Bonnet Nut for Steady Flow (Qty. 1)



510-029

1. Comm Port (Qty. 2)



510-481

1. Comm Packing Gland (Qty. 1)



510-483

1. One Way Valve Mounting O-ring (Qty. 1)



510-490

1. Regulator Mount Nut (Qty. 1)



520-033

1. Bent Tube (Qty. 1)

NOT SHOWN

510-260 6.5" × 0.153"

1. Face Port O-ring

510-450 9" × 0.278"

1. Neck Ring O-ring

⚠ CAUTION

Use only KMDSI original replacement parts. Using other manufacturers' parts will interfere with the performance of your life support equipment and may jeopardize your safety. Additionally, any substitutions will void any warranties offered by KMDSI. When ordering spares, always insist on Kirby Morgan Genuine Parts.





Kirby Morgan Dive Systems, Inc.®

1430 Jason Way Santa Maria, California 93455

Phone: 805/928-7772 Fax: 805/928-0342

www.KirbyMorgan.com email: kmdsi@KirbyMorgan.com

Purge Valve Installation Instructions:

1. Place purge valve P/N 810-025 into purge valve body (not included) P/N 820-120. See figure 1.

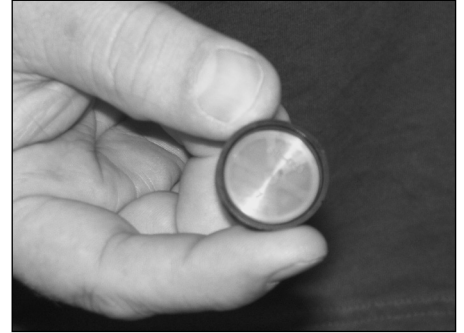
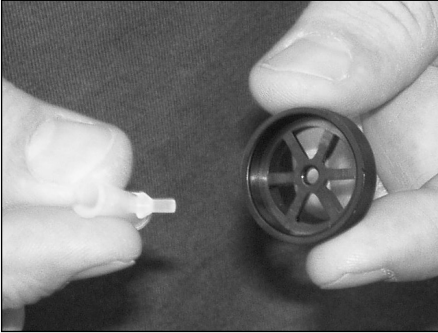


Figure 1: Installation of purge valve into purge valve body

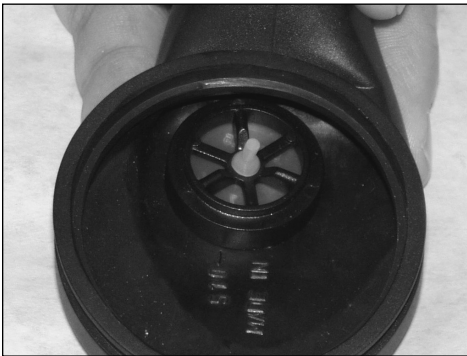


Figure 2

2. Place purge valve and body assembly into water purge deflector (not included) P/N 510-780 as shown in figure 2.



Figure 3

3. Push purge valve and body assembly—with thumb into water purge deflector. See figure 3.



Kirby Morgan Dive Systems, Inc.®

1430 Jason Way Santa Maria, California 93455

Phone: 805/928-7772 Fax: 805/928-0342

www.KirbyMorgan.com email: kmdsi@KirbyMorgan.com



Figure 4

4. Turn water purge deflector assembly over. With one thumb push purge valve and body assembly until a slight pop is heard. See figure 4.

5. Turn the assembly back over and work purge valve and body until firmly in place. Take notice that the purge valve and body are seated correctly. See figure 5a and 5b.

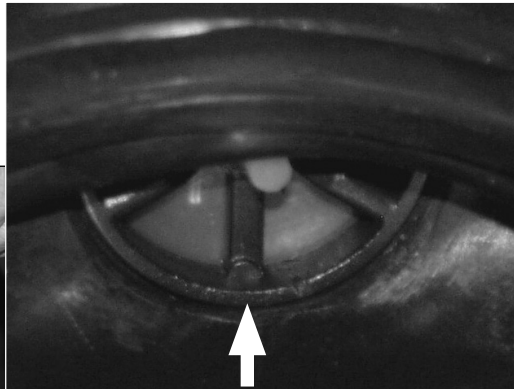


Figure 5a: Correct

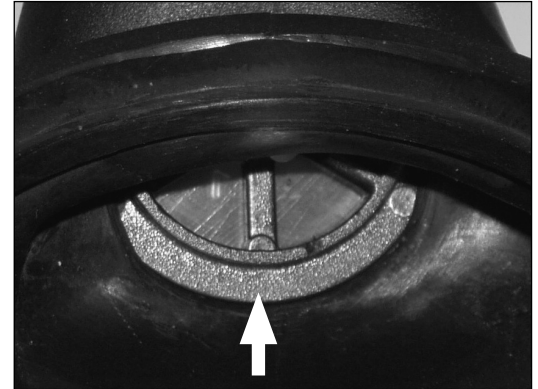


Figure 5b: Incorrect

6. Perform an exhale and inhale test. Gas should not escape when exhaling into the smaller opening of the deflector and when inhaling gas should flow freely. This will confirm correct seating of the valve cage and valve.