



Kirby Morgan Dive Systems, Inc.®

1430 Jason Way Santa Maria, California 93455

Phone: 805/928-7772 Fax: 805/928-0342

www.KirbyMorgan.com email: kmdsi@KirbyMorgan.com

Part #525-359 SL 27® with 455 Regulator Soft Goods Overhaul Kit

PART #	DESCRIPTION	QTY	PART #	DESCRIPTION	QTY
210-055	O-ring, Balanced	1	510-557	Water Dump Valve, 27	1
210-060	Valve Seat	1	510-776	Exhaust Valve	3
220-056	Lever Bearing Clip	1	510-789	Diaphragm Assembly	1
310-003	O-ring	3	520-024	Packing	1
510-008	O-ring	2	520-030	Washer	1
510-010	O-ring	3	520-031	Washer	1
510-012	O-ring	2	520-033	O-ring, Teflon®	1
510-015	O-ring	2	520-042	Tie Wrap	4
510-017	O-ring	1	520-167	Teflon® Washer for Swing Catch	1
510-018	O-ring	1	525-032	Kit, Whisker Clamp Replacement	1
510-019	O-ring	1	525-330	One Way Valve Kit	1
510-029	O-ring	1	530-028	Nut, Lock	1
510-260	O-ring, View Port	1	540-095	Packing Washer	1
510-450	O-ring, Neck Ring	1	540-531	Lock Clip	1
510-481	O-ring	1	550-640	Shaft Bearing Clip	1
510-483	O-ring	1	810-025	Valve, Purge	1
510-490	O-ring	1			
510-550	Valve, Oral Nasal	1			

***See next page for O-ring Identification**

Equipment used for air diving or diving with oxygen mixtures containing **LESS than 40% oxygen** can be lubricated with food-grade silicone, such as Molykote® 111 or equivalent. DO NOT mix types of lubes in the regulators. At a minimum, all helmet or BandMask® O-rings should be replaced at least once a year in accordance with the A2.1 checklist for the helmet or mask being inspected. During daily and monthly maintenance, O-rings and valves may be reused if no damage or deformation is found. O-rings and valves may require replacement more often than yearly if helmet or mask use is extreme, or if the helmet or mask is used in waters containing oil or chemical contamination. Daily cleaning and inspections, as well as the monthly inspection (A2.2 checklist), will more accurately identify the need than simply counting hours between overhauls. Store spare O-rings, valves, and soft goods in a cool, dark, dry place. Avoid prolonged exposure to temperatures above 90 °F (32 °C) and/or to ultraviolet rays. Do not lubricate exhaust valves and diaphragms. Lubricating valves can cause dirt to adhere, leading to leakage.



Kirby Morgan Dive Systems, Inc.®

1430 Jason Way Santa Maria, California 93455

Phone: 805/928-7772 Fax: 805/928-0342

www.KirbyMorgan.com email: kmdsi@KirbyMorgan.com



210-055

1. Balance Spacer (Qty. 1)



310-003

1. Low Pressure Side Block Port Plug (*Bottom*) (Qty. 1)

2. Regulator Body LP Port Plugs (Qty. 2)



510-008

1. Nose Block Shaft (Qty. 2)



510-010

1. Nose Block Guide Seal (Qty. 1)

2. Steady Flow (Qty. 1)

3. Reg. Adjustment Nipple (Qty. 1)



510-012

1. Bent Tube (Qty. 1)

2. Flex Knob Adjustment Shaft (Qty. 1)



510-015

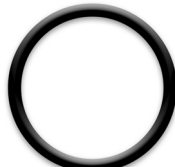
1. Bonnet Nut for Steady Flow (Qty. 1)

2. Regulator Main Tube (Qty. 1)



510-017

1. Bent Tube Adapter (Qty. 1)



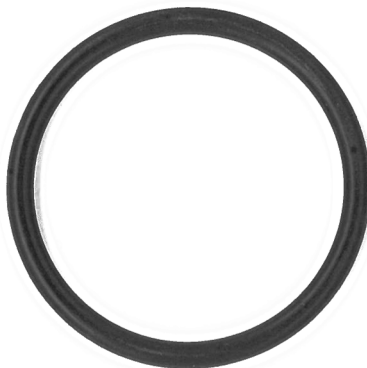
510-018

1. Regulator Adjustment Knob Packing Nut (Qty. 1)



510-019

1. Regulator Exhaust (Qty. 1)



510-029

1. Comm Port (Qty. 2)



510-481

1. Comm Packing Gland (Qty. 1)



510-483

1. One Way Valve Mounting O-ring (Qty. 1)



510-490

1. Regulator Mount Nut (Qty. 1)



520-033

1. Bent Tube (Qty. 1)

NOT SHOWN

510-260 6.5" × 0.153"
1. Face Port O-ring

510-450 9" × 0.278"
1. Neck Ring O-ring

⚠ CAUTION

Use only KMDSI original replacement parts. Using other manufacturers' parts will interfere with the performance of your life support equipment and may jeopardize your safety. Additionally, any substitutions will void any warranties offered by KMDSI. When ordering spares, always insist on Kirby Morgan Genuine Parts.





Kirby Morgan Dive Systems, Inc.®

1430 Jason Way Santa Maria, California 93455

Phone: 805/928-7772 Fax: 805/928-0342

www.KirbyMorgan.com email: kmdsi@KirbyMorgan.com

Purge Valve Installation Instructions:

1. Place purge valve P/N 810-025 into purge valve body (not included) P/N 820-120. See figure 1.

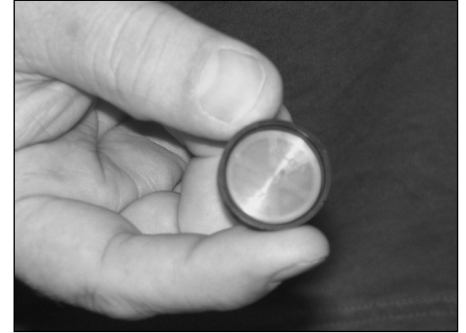
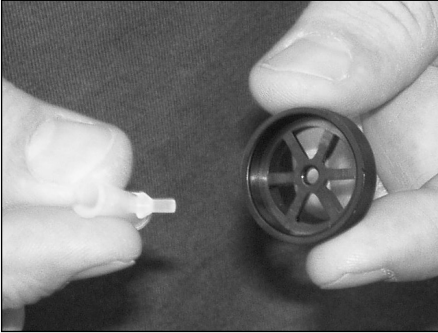


Figure 1: Installation of purge valve into purge valve body

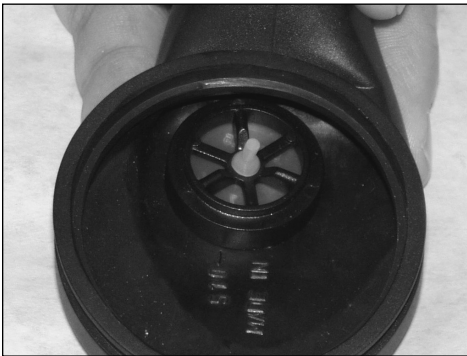


Figure 2

2. Place purge valve and body assembly into water purge deflector (not included) P/N 510-780 as shown in figure 2.



Figure 3

3. Push purge valve and body assembly—with thumb into water purge deflector. See figure 3.



Kirby Morgan Dive Systems, Inc.®

1430 Jason Way Santa Maria, California 93455

Phone: 805/928-7772 Fax: 805/928-0342

www.KirbyMorgan.com email: kmdsi@KirbyMorgan.com



Figure 4

4. Turn water purge deflector assembly over. With one thumb push purge valve and body assembly until a slight pop is heard. See figure 4.

5. Turn the assembly back over and work purge valve and body until firmly in place. Take notice that the purge valve and body are seated correctly. See figure 5a and 5b.

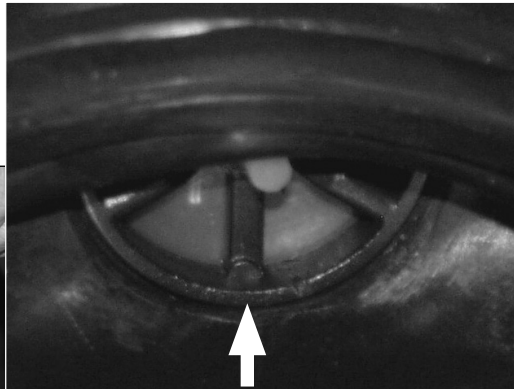
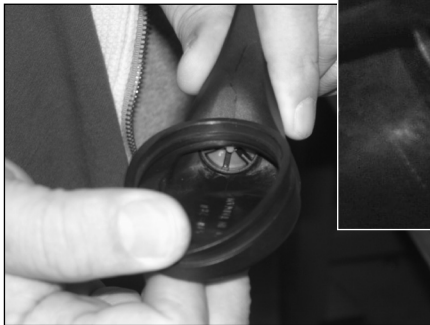


Figure 5a: Correct

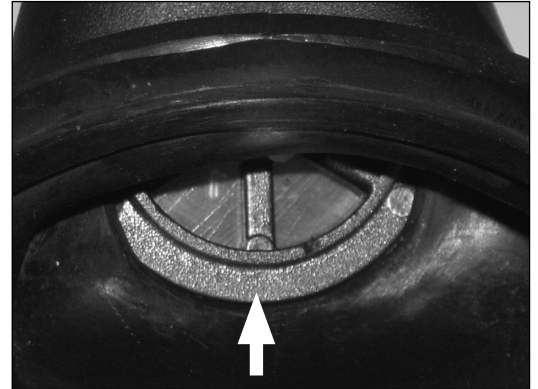


Figure 5b: Incorrect

6. Perform an exhale and inhale test. Gas should not escape when exhaling into the smaller opening of the deflector and when inhaling gas should flow freely. This will confirm correct seating of the valve cage and valve.