



Kirby Morgan Dive Systems, Inc.®

1430 Jason Way Santa Maria, California 93455

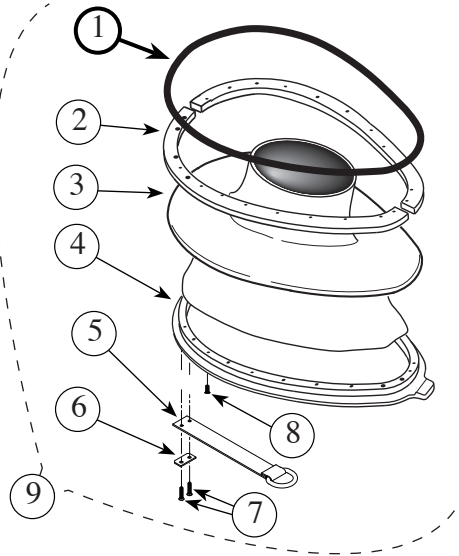
Phone: 805/928-7772 Fax: 805/928-0342

www.KirbyMorgan.com email: kmdsi@KirbyMorgan.com

Part # 510-674/675/676/679/680/681 Cold Water Neck Dam

Parts Needed:

	Part #	Description	Qty
1.	510-450	O-ring, Main Seal	1
2.	540-546	Split Rings, Stainless Steel	2
3.	See Heading	Neck Dam	1
4.	560-542	Stepped Ring, Stainless Steel	1
5.	530-808	Pull Strap	1
6.	540-115	Strap Plate	1
7.	530-220	Pull Strap Mount Screws	2
8.	530-024	Neck Dam Mount Screw	24
9.	See Heading	Neck Dam/Ring Assembly	1



Tools Required:

1. 3/64" Allen Wrench.
2. #2 Phillips Screwdriver
3. Torque Screwdriver
3/64" Allen wrench attachment
2 point Phillips head screwdriver attachment.
4. Silicone Lubricant.
5. Sharp Razor Blade

Neck Dam Removal:

1. Remove the O-ring from the neck ring assembly.
2. Use the 3/64" Allen wrench to remove the chin weight mounting screws.
Remove chin weight.
3. Remove the pull strap mount screws with a #2 Phillips screwdriver. Remove pull strap and strap plate.
4. Remove the chin strap and adjustment buckle mounting screws.
Remove chin strap and adjustment buckle.
5. Unscrew all of the neck dam mount screws from the step ring.
6. Remove the old neck dam with the split rings from the stepped ring.
7. Remove the 2 split rings from the old neck dam. Discard old neck dam.
8. Inspect for damage and clean all parts as needed.

Read all instructions prior to installing new neck dam.

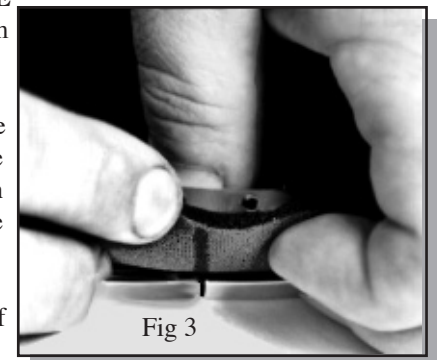
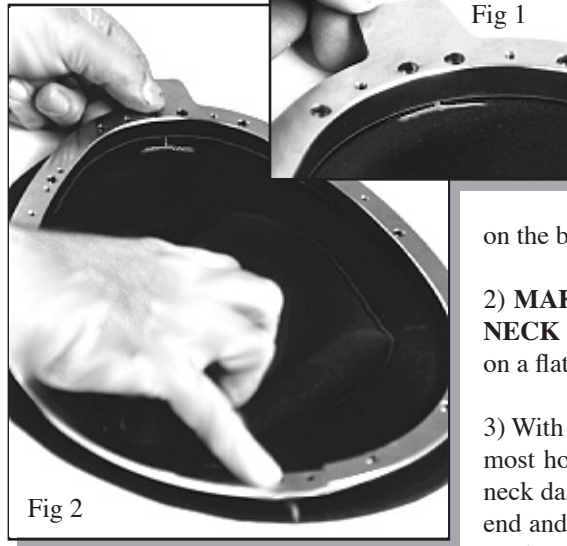
Neoprene Neck Dam Replacement:

New Neoprene neck dams are nylon 2 side, 2 color, wetsuit material, 1/8" thick. Inside is BLUE, outside is BLACK. Both sides are marked at the front and back center lines to help with alignment for assembly.

- 1) On a flat level surface, align the proper ends of the split rings P/N 540-546. Using any type of tape available, duct masking etc., tape both ends together on the bottom side only, so they will not separate during assembly.

- 2) **MAKING SURE THE BLACK SIDE OF THE NECK DAM (2) IS FACING OUT**, place the dam on a flat level surface.

- 3) With the stepped ring P/N 560-542 side having the most holes, facing up, place the ring, on top of the neck dam, making sure the center of the ring at each end and the inside curve of the ring, line up with the marks on the neck dam. Figs 1 & 2



- 4) Holding the neck dam onto the stepped ring, lift the 2 parts together and place them on top of the 2 aligned split rings.

NOTE: The neck dam, stepped ring and split rings MUST be properly aligned in order to get all of the screws to thread correctly. When placing the neck dam & stepped ring on top of the split rings, be sure the center (straight) alignment marks on both ends are over the splits in the bottom rings.