

# **User Guide For SuperFlow® Second Stage & Non-Balanced SCUBA Regulator Assemblies**



## **Document P/N 100-120**

### **Kirby Morgan Dive Systems, Inc.**

1430 Jason Way

Santa Maria, CA 93455, USA

Telephone (805) 928-7772

FAX (805) 928-0342

E-Mail: [kmddsi@kirbymorgan.com](mailto:kmddsi@kirbymorgan.com)

Web Site: [www.kirbymorgan.com](http://www.kirbymorgan.com)

Kirby Morgan, SuperLite, BandMask, Band Mask, KMB, KMB-Band Mask, DSI, Diving Systems International, EXO, REX, SuperFlow and DECA are all registered trademarks of Kirby Morgan Dive Systems, Inc. Use of these terms to describe products that are not manufactured by KMDSI is illegal.

The two dimensional images (such as photographs and illustrations) of our products are © copyrighted and trademarks of Kirby Morgan Dive Systems, Inc. The three dimensional forms of our products are trademark, trade design and trade dress protected.

© MMXXI Kirby Morgan Dive Systems, Inc. All rights reserved. This user guide is made available for the express use of owner of this Kirby Morgan product. No part of this user guide may be reproduced, stored in any retrieval system, or transmitted, or used in any form or by any means, whether graphic, electronic, mechanical, photocopy, or otherwise by technology known or unknown, without the prior written permission of Kirby Morgan Dive Systems, Inc.

---

# WARRANTY

## *USE ONLY KIRBY MORGAN® GENUINE PARTS*

Kirby Morgan Dive Systems Inc., (KMDSI) warrants every new helmet, BandMask®, Full Face Mask, SCUBA regulator or air control system (KMACS 5) (each, a Product) to be free from defects in workmanship for a period of three hundred sixty five (365) days from the date of purchase from a KMDSI authorized dealer. This warranty covers all metal, fiberglass, and plastic parts, but does NOT cover rubber parts, communications components, head cushions, chin cushions, or foam spacers.

Any defect of the product in workmanship or material covered by this warranty discovered within three hundred sixty five (365) days from the date of purchase must be promptly communicated in writing to the nearest authorized KMDSI dealer or (if no such dealer in the buyer's country) contact KMDSI directly at (805) 928-7772. No Product returns will be accepted by KMDSI without a returned merchandise authorization (RMA) number from KMDSI. Upon receipt of the RMA from KMDSI, the buyer should return the defective Product or part, freight prepaid, to an authorized KMDSI dealer or the KMDSI plant, as directed by the RMA department. KMDSI will repair or replace the Product at no charge, within a reasonable time, as it deems necessary.

### **THIS WARRANTY IS NULL AND VOID IF:**

- 1) The Product is not registered with KMDSI within ten (10) days of purchase, or
- 2) The Product has not been properly serviced and/or maintained by KMDSI factory trained/approved personnel, according to factory recommended procedures provided in the manual, along with the KMDSI Appendices Checklists, and/or Product updates have not been performed as recommended by KMDSI, or
- 3) Unauthorized attachments or modifications have been made to the Product, or
- 4) The Product has been used for purposes other than those for which it was designed, or otherwise has been abused, misused, or subjected to unusual conditions, or the Product's intended service has been exceeded.

**EXCEPT AS SPECIFICALLY PROVIDED HEREIN, THERE ARE NO OTHER WARRANTIES, EXPRESS OR IMPLIED, INCLUDING, BUT NOT LIMITED TO, ANY IMPLIED WARRANTIES FOR MERCHANTABILITY OR FITNESS FOR A PARTICULAR PURPOSE. THE HELMETS, BANDMASKS AND AIR CONTROL SYSTEMS COVERED BY THIS WARRANTY ARE MARKETED AND SOLD BY KMDSI SOLELY FOR COMMERCIAL OR INDUSTRIAL USE AND ARE NOT A CONSUMER PRODUCT INTENDED FOR PERSONAL, FAMILY, OR HOUSEHOLD USE.**

In purchasing any Product subject to this warranty, the buyer agrees that its sole and exclusive remedy and KMDSI's entire obligation in contract, tort, or otherwise under this contract will be repair or replacement at KMDSI's option of the Product or any parts which KMDSI determines during the applicable warranty period are defective in workmanship or material covered by this warranty. All exchanged parts are the property of KMDSI. The buyer's exclusive remedy and KMDSI's entire liability in contract, tort, or otherwise is the payment by KMDSI of the buyer's actual damages up to but not to exceed the amount paid by the buyer for the Product.

In no event shall KMDSI be liable to the buyer for indirect, special, incidental or consequential damages (including, but not limited to, damages for lost profits, lost sales, loss of business opportunity, or for injury to persons or property arising out of the use of the Products). Any claim or action for breach of warranty must be commenced within one year following delivery of the Product to the buyer.

Buyer acknowledges that this warranty is the sole and exclusive warranty of the Product and that it supersedes any and all oral or written representations and undertakings between KMDSI, its dealers, and the buyer relating to the Products. This warranty allocates the risks of product failure between KMDSI and the buyer, which allocation is recognized by both parties and is reflected in the price of the goods. The buyer acknowledges that they have read this agreement, understand it, and are bound by its terms.

**IMPORTANT:** Please register your purchase online at [www.kirbymorgan.com/support/product-registration-form](http://www.kirbymorgan.com/support/product-registration-form). If you have a problem with the online registration, please contact your Kirby Morgan dealer, or Kirby Morgan directly by calling (805) 928-7772, or email [sales@kirbymorgan.com](mailto:sales@kirbymorgan.com).

**Kirby Morgan® thanks you for your purchase.**

This page intentionally left blank

---

# Table Of Contents

<b>6</b>	Definitions of Signal Words Used in this Guide
<b>7</b>	Product Changes
<b>9</b>	Cold Water Diving
<b>10</b>	1st Stage SCUBA Regulator and 2nd Stage Regulator Maximum Work Pressure
<b>10</b>	Divers Work Rate Expressed as Respiratory Minute Volume (RMV)*
<b>10</b>	Regulator Transport and Storage
<b>12</b>	Regulator Serial Number Location
<b>12</b>	Definitions
<b>13</b>	Kirby Morgan SuperFlow® Second Stage SCUBA Regulators
<b>13</b>	General Precautions and Warnings
<b>14</b>	Preparation and Setup
<b>14</b>	Pre-Dive Checkout
<b>15</b>	Inspection Checklist
<b>16</b>	During the Dive
<b>16</b>	After the Dive
<b>17</b>	Removal of the Regulator Assembly from the Cylinder Valve
<b>17</b>	Safety Precautions
<b>17</b>	Specifications
<b>18</b>	Routine Maintenance
<b>18</b>	Daily Pre-Dive Inspection Checklist
<b>19</b>	Post Dive Maintenance
<b>20</b>	Scheduled Maintenance

- 
- 23** BlowApart: Plastic Adjustable Second Stage SCUBA Regulator P/N 305-166
  - 24** BlowApart: Metal Second Stage SCUBA Regulator P/N 305-175
  - 25** BlowApart: Plastic Non-Adjustable Second Stage SCUBA Regulator (Octopus) Part # 305-171
  - 26** Maintenance Record

## Definitions of Signal Words Used in this Guide

The original language of the Kirby Morgan Manuals is English. Translation into other languages will be provided upon request. KMDSI may charge a fee for these services.

Throughout this user guide we will use certain words to call your attention to conditions, practices or techniques that may directly affect your safety. Pay particular attention to information introduced by the following signal words:

### **DANGER**

**This word indicates an imminently hazardous situation, which if not avoided, could result in death or serious injury.**

### **WARNING**

**This word indicates a potentially hazardous situation, which, if not avoided, could result in death or serious injury.**

### **CAUTION**

**This word indicates a potentially hazardous situation, which if not avoided, may result in minor or moderate injury. It may also be used to alert against unsafe practices.**

### **NOTICE**

**This word is used to address practices not related to personal injury.**

This operation user guide contains important safety information and should always be available to those personnel operating this equipment. Read, understand, and retain all instructions before operating this equipment to prevent injury or equipment damage.

If you sell or loan this equipment to another person, be sure that this user guide accompanies the gear when you transfer possession to them.

It is important for the user of this equipment to understand that we at Kirby Morgan consider ourselves to be only a part of the process of diving equipment design. We welcome and encourage all input from our customers. Our goal is to provide the highest quality diving equipment and service possible. If you have any questions or comments, please feel free to contact us at (805) 928-7772 or visit our web site at [www.kirbymorgan.com](http://www.kirbymorgan.com).

### **CAUTION**

**By using this equipment the diver acknowledges that he has read and completely understands the instruction manual provided with it, and hereby agrees to hold harmless Kirby Morgan Dive Systems, inc. from any accident, malfunction, or other event arising from the misuse of the equipment, or from any lack of, or incomplete understanding of its operation and function.**

### **CAUTION**

**This regulator assembly should be used only with breathing air meeting requirements of the EN12021**

## **Product Changes**

Following publication of this booklet, certain changes in standard equipment, options, prices and the like may have occurred which would not be included in these pages. Your Authorized KMDSI dealer is your best source for up-to-date information on any of these products. Kirby Morgan Dive Systems Inc. reserves the right to change product specifications at any time without incurring obligations.

In order to use this regulator assembly, it is essential to complete a training course and receive certification, issued by a recognized national SCUBA training organization, confirming your ability to dive.

## **⚠ WARNING**



The first stage scuba regulator has not been designed or tested for use with breathing gas mixtures containing greater than 23% oxygen.

Do not use the first stage or the regulator assembly with second stage with breathing gases containing more than 23% oxygen. Use with gas mixtures containing in excess of 23% oxygen could lead to fires or explosions.

## **⚠ WARNING**

The maximum approved depth for the use of this equipment is 50 meters (164 FSW) @ 62.5 RMV (heavy work load). Do not exceed this limit. The use of open circuit SCUBA at depths below 164 FSW poses extreme risks including out-of-air emergencies and decompression sickness, which can lead to serious personal injury or death.

## **⚠ DANGER**



Never use solvents or aerosol sprays on or around the regulator assembly. Certain solvents and propulsion agents attack and damage rubber and certain plastics. This could lead to regulator failure. Drowning could result.

This user guide gives basic daily operational information for the Kirby Morgan SuperFlow® 2nd Stage SCUBA Regulator assemblies (non-balanced).

Before each use the regulator assembly should be carefully checked and submitted to the operational tests. Never dive with a regulator showing any signs of deterioration or a below normal performance.

The hoses fitted to the regulator assembly, and supplied by KMDSI meet the requirements of the EN250 standard concerning the connection of components. Only original Kirby Morgan hoses should be used as replacements.

- HP thread  $\frac{7}{16}$ " - 20 UNF
- LP thread  $\frac{3}{8}$ " - 24 UNF



**⚠ CAUTION**

**Always allow pressure to build up slowly in the regulator by turning on the cylinder valve slowly.**

Never grease the parts of your regulator with a lubricant containing hydrocarbons, household oil, or motor oil.

## Cold Water Diving

Before diving in cold water (water temperature below 10 °C/50 °F), the diver should be trained and have mastered the techniques of cold water diving, learning techniques and all precautions necessary to avoid freezing of the regulator. All of this is included in the training programs of organizations offering courses in diving in cold water or under ice. You should also use equipment intended for this purpose.

In order to reduce the risks of regulator freezing when diving in cold water (below 10 °C / 50 °F), consider doing the following:

1. Protect your regulators from any water entering the first or second stages.
2. Protect your equipment from cold before the dive. Keep your regulator and all its accessories in a warm dry place.
3. Carry out all pre-dive checks of your equipment in a warm dry place if necessary, before going to the dive site.
4. Avoid breathing through the regulator or pressing the purge button in very cold air before entering the water.
5. Check that the air used to fill your cylinder is dry. The water vapor contained in this air should have a condensation point below -54 °C / 65.2 °F. Excess water vapor can freeze, causing a free flow, or blocking the air flow completely.

## 1st Stage SCUBA Regulator and 2nd Stage Regulator Maximum Work Pressure

REGULATORS	PSI	BAR
1st Stage	145	9.99
2nd Stage	150	10.34

## Divers Work Rate Expressed as Respiratory Minute Volume (RMV)\*

WORK LOAD	RMV	CUBIC FEET/ MINUTE (CFM)	EQUIVALENT LAND BASED EXERCISE
Rest	7-10 RMV	0.2 - 0.35 CFM	
Light Work	10-20 RMV	0.35 - 0.7 CFM	Walking 2 miles per hour
Moderate Work	20-37 RMV	0.7 - 1.3 CFM	Walking 4 miles per hour
Heavy Work	37-54 RMV	1.3 - 1.9 CFM	Running 8 miles per hour
Severe Work	55-100 RMV	1.94 - 3.5 CFM	

\* source: U.S. Navy Diving Manual

## Regulator Transport and Storage

### Second Stage Plastic P/N 305-166:

The kind of package is a plastic bag that is sealed;

The weight of the bag is usually .75 pounds (.35 Kg);

The package dimension is 8 × 10 inches (203.2 × 254 mm);

One regulator is packed per bag;

The regulators are sent to dealers by plane and truck. Depending on how the dealer wants it sent.

**Second Stage Metal P/N 305-175:**

The kind of package is a plastic bag that is sealed;

The weight of the bag is usually 1 pound (.45 Kg);

The package dimension is 8 × 10 inches (203.2 × 254 mm);

One regulator is packed per bag;

The regulators are sent to dealers by air or truck, depending on dealer request.

**First and Second Stage Regulators when purchased as assemblies (P/Ns 300-266, 300-276, 300-286):**

The kind of package is a cardboard box with cardboard inserts to stabilize the regulators;

The weight of the box is usually 3.7 pound (1.67 Kg);

The package dimension is 13 × 9 ½ × 4 ¼ inches (330.2 × 241.3 × 107.95 mm);

One First Stage and one Second Stage regulator is packed per box;

The regulators are sent to dealers by plane and truck. Depending on how the dealer wants it sent.



*Packaging Step 1*



*Packaging Step 2*



*Packaging Step 3*



*Packaging Step 4*



*Packaging Step 5*

## Regulator Serial Number Location

On both the 305-166 Adjustable and the 305-171 Non-Adjustable Plastic Second Stage regulators the serial number is printed on the top part, near the mouth piece. On the 305-175 Metal Adjustable (shown below) the serial number is laser etched on the top of the metal body.



*The 305-175 adjustable Metal SuperFlow® second stage regulator.*

## Definitions

**Second Stage Water Temperature** >10 °C (50 °F)

**Cold Water Diving** - water temperature below +10 °C (50 °F)

**Warm Water Diving** - water temperature over +10 °C (50 °F)

**Maximum Depth:** 50 m / 164 feet.

**Storage Temperatures:** +70 °C / +158 °F (max) -30 °C / -22°F (min)

# Kirby Morgan SuperFlow® Second Stage SCUBA Regulators

Thank you for choosing a Kirby Morgan regulator.

Your new second stage regulator has been designed and manufactured with pride, according to Kirby Morgan's world renowned exacting standards for quality and performance. The Kirby Morgan SuperFlow® Regulators are high performance and designed for the professional SCUBA diver. The second stages are modified versions of the same regulator used on the Kirby Morgan® SuperLite® 17B Helmet. Many of the parts used in the SuperFlow® are identical to those used on our helmet and BandMask® regulators. This is helpful to dealers in stocking parts for service and repair.

Provided it has been purchased new from an Authorized KMDSI Dealer, your regulator assembly is covered by KMDSI's Limited Warranty. Be sure to read the warranty and register your purchase online at [www.kirbymorgan.com](http://www.kirbymorgan.com) within ten (10) days of purchase. Also save your sales receipt. A copy of your receipt must be presented whenever obtaining warranty service.

Perhaps more than any other piece of diving equipment, your regulator's function and performance relies greatly on the care and maintenance it receives, in addition to regularly scheduled dealer service. Before you dive with your new Kirby Morgan regulator, it is important to read this guide in its entirety; to become familiar with its features, as well as the correct procedures for setup, pre-dive inspection, and post-dive maintenance.

## General Precautions and Warnings

Before using this regulator assembly, you must have successfully received training and certification in the technique of SCUBA diving from a recognized certification agency (or any U.S. Military or government operated diving school).

Use of this equipment by a person who is not certified by a recognized agency shall render all warranties, express or implied, null and void. Use of SCUBA equipment by uncertified, or untrained persons, is dangerous and can result in serious injury or death.

## **WARNING**

**Never lubricate any part of the regulator or cylinder valve with any lubricant. Lubrication must only be performed by a KMDSI factory trained technician. Improper lubrication can lead to regulator malfunction. Drowning can result.**

## **WARNING**

**Factory prescribed service for this regulator assembly must be performed at least once each year by a factory trained technician. Repair, service, disassembly, adjustment and reassembly must not be attempted by persons who are not factory trained and authorized by KMDSI. Attempted servicing or repairs by untrained / unauthorized personnel can lead to mistakes and/or use of incorrect parts, which can cause regulator malfunction, resulting in serious injury or death.**

## **Preparation and Setup**

KMDSI recommends that you bring your regulator assembly to your Authorized KMDSI Dealer for the installation of any accessory items, including instrumentation, LP quick disconnect hoses, and alternate air sources. Your dealer can also answer any questions you may have pertaining to the information in this guide.

1. (Adjustable Second Stages) If the adjustment knob has been turned “out” (counter-clockwise), gently turn it “in” (clockwise), only until it stops. Do not apply excessive pressure.
2. If you are using a standard cylinder with a yoke connector valve, inspect the cylinder valve O-ring for any wear or damage.

## **Pre-Dive Checkout**

Before each use, the regulator assembly must be given a thorough visual inspection and functional test. NEVER dive with a regulator that shows signs of damage, or provides substandard performance until it has received a complete inspection and service from an Authorized KMDSI repair technician.

# Inspection Checklist

1. With the cylinder valve facing away from you, release a small amount of air from the cylinder. When air is heard exiting, immediately close the valve. This will clear any moisture or debris that may be inside the cylinder valve outlet opening.
2. Prior to each use, the regulator assembly must be given a thorough visual inspection and functional test. Carefully inspect all hoses at their fittings to ensure they are securely connected into their respective ports on the first stage. If using with a KMDSI M-48 full face mask, ensure the regulator is properly installed and secured into the pod.

If hose protectors are present, slide the protectors back to expose the hose fittings, and inspect the fittings. Inspect the length of each hose to ensure that the hoses are not blistered, cut, or otherwise damaged.

3. Visually inspect the second stage regulator (and first stage if present) for any signs of external damage.
4. Partially unscrew the yoke screw of the first stage regulator so that the dust cap can be removed from the filter and air inlet.
5. Place the first stage regulator over the cylinder valve so that the inlet fitting aligns with the O-ring of the cylinder valve and the LP hose of the primary second stage will be routed over the right shoulder. While holding the first stage in place, turn the yoke screw clockwise. Ensure that the yoke screw mates into the small dimple on the backside of the cylinder valve, and tighten finger tight only.
6. **Negative pressure test.** Inhale from the second stage regulator. Resistance should be met when inhaling and no air should enter or be heard entering into the second stage regulator.
7. If a submersible pressure gauge, instead of a wireless transmitter, is attached to the first stage, ensure that the gauge is facing away from you. Pressurize the regulator by slowly turning the cylinder valve handwheel counter-clockwise. Continue turning the cylinder valve hand wheel counter-clockwise until it is fully open.
8. Listen near the first stage to check for any leakage. If leakage is detected, immerse the first stage and cylinder valve while pressurized to determine the source.
9. If leakage has been detected, follow the procedure for removing the regulator from the cylinder valve. If air was leaking between the first stage and cylinder valve, replace or reseal the cylinder valve O-ring as needed and repeat the above procedure. If leakage persists, do not dive with the regulator! Return the regulator to a KMDSI Dealer.
10. Slowly back out on the second stage regulator adjustment knob (coun-

ter clockwise until a slight free flow develops, then slowly rotate the adjustment knob in (counterclockwise) until the free flow stops. At this point the regulator is set for the least amount of breathing effort. Test breathe by taking several shallow and deep breaths to ensure the regulator breathes properly.

11. Purge test. With a finger over the mouthpiece, press in on the purge button. The purge button should travel between  $\frac{1}{8}$ " to  $\frac{1}{4}$ " inch before air starts flowing. When depressing the purge button all the way in, a strong surge of air should be felt. If the purge button travel is greater than  $\frac{1}{8}$ ", the regulator should be re-adjusted by a KMDSI certified technician.

## During the Dive

1. The SuperFlow® Second Stage regulators P/Ns 305-166 and 305-175 can be adjusted by the diver during the dive by simply rotating the spring bias adjustment knob OUT (counter clockwise) to make the demand valve more sensitive, or IN (clockwise) to make the demand valve less sensitive. In normal operation the regulator adjustment should be set at the easiest breathing setting by rotating the adjustment knob OUT (counterclockwise) until a slight free flow develops and then rotate it in until the free flow stops. At this point the diver will be taking full advantage of the regulator's performance.



### NOTE

Prior to entering the water or removing the regulator from your mouth, the regulator adjustment knob should be rotated IN (clockwise about 1-1 ½ turns) to keep the regulator from free flowing when the mouthpiece is exposed to the surrounding water. As soon as the regulator is placed back in the mouth and breathing resumes, the knob should be readjusted for minimal breathing effort

## ⚠ WARNING

**Diving an adjustable demand regulator that is adjusted to breathe with heavy resistance could cause the diver to become exhausted. This could lead to serious injury or death by drowning. Always adjust the demand regulator for the easiest breathing.**

## After the Dive

If fresh water is available, rinse your second stage regulator completely while it is still connected to the tank before depressurizing it. This helps to prevent any contaminants from entering sealing surfaces inside the regula-



tor. If this is not possible, follow the procedure for removing the regulator assembly from the cylinder valve (below) and then rinse.

## Removal of the Regulator Assembly from the Cylinder Valve

1. Shut off the cylinder air supply by turning the cylinder valve hand wheel clockwise until it stops.
2. While observing the submersible pressure gauge, depress the purge button of the second-stage. When the gauge reads zero and airflow can no longer be heard from the second stage, release the purge button.
3. Turn the yoke screw counter-clockwise to loosen it and remove the first stage from the cylinder valve.
4. Dry the dust cap.
5. Place the dust cap over the first stage inlet fitting and seal it securely in place by tightening down the yoke screw. Do not overtighten the cap.

## Safety Precautions

### WARNING

**Use only genuine Kirby Morgan replacement parts. Parts manufactured by third party companies can malfunction and cause accidents, leading to serious injury or death.**

To ensure the best possible regulator performance and to avoid damage to regulator components, use only KMDSI original factory replacement parts.

To avoid damage to regulator components, only the correct size and types of tools should be used. The use of adjustable wrenches should be avoided whenever possible to avoid damage to soft brass parts.

Should you encounter technical difficulties in servicing a Kirby Morgan regulator, please contact Kirby Morgan or Dive Lab directly for assistance.

## Specifications

### **305-166 Plastic SuperFlow® SCUBA Regulator:**

Type: Bias Adjustable, Downstream Demand, Non-Balanced.

Adjustable range: 70-180 psi, Optimum: 140 psi.

Inlet fitting threads:  $\frac{1}{8}$ -18 UNF-2A

Body Material: Modified PPO plastic.

Diaphragm, Exhaust valve, Mouthpiece: Silicone.  
O-Rings: BUNA-N (Nitrile).  
Exhaust T: Thermoplastic Elastomer (polymer).  
Total Weight: 11.5 ounces.

### **305-175 Metal SuperFlow® SCUBA Regulator:**

Type: Bias Adjustable, Downstream Demand, Non-Balanced.  
Adjustable range: 70-180 psi, Optimum: 140 psi.  
Inlet fitting threads:  $\frac{9}{16}$ -18 UNF-2A  
Body Material: Chrome plated Brass.  
Diaphragm, Exhaust valve, Mouthpiece: Silicone.  
O-Rings: BUNA-N (Nitrile).  
Exhaust T: Thermoplastic Elastomer (polymer).  
Total Weight: 15.4 ounces.

### **305-171 SuperFlow® SCUBA Non-Adjustable Regulator (Octopus):**

Type: Non-Adjustable, Downstream Demand, Non-Balanced.  
PSI: 140 psi Optimal.  
Inlet fitting threads:  $\frac{9}{16}$ -18 UNF-2A  
Body Material: Modified PPO plastic.  
Diaphragm, Exhaust valve, Mouthpiece: Silicone.  
O-Rings: BUNA-N (Nitrile).  
Exhaust T: Thermoplastic Elastomer (polymer).  
Total Weight: 9 ounces.

## **Routine Maintenance**

Routine maintenance is the best way to ensure long regulator assembly life and optimum performance. All end users should be instructed in the proper procedures for regulator care.

## **Daily Pre-Dive Inspection Checklist**

1. Check the maintenance log to ensure the regulator has been overhauled within the past 12 months.
2. Visually inspect the first and second stage to insure all ports are plugged and the diaphragm cover and exhaust tee are secure.
3. Visually inspect all hoses for signs of damage such as cracking, fitting slippage, cuts or abrasions. Replace if these signs of damage are present.
4. Visually inspect all regulator components including submersible pressure gage, inflator hose and other components.
5. Visually inspect the first stage filter in the yoke for signs of dirt and corrosion.

6. **Negative pressure test.** Inhale from the second stage regulator. Resistance should be met when inhaling and no air should enter or be heard entering into the second stage regulator.
7. Rotate the adjustment knob in clockwise, then attach the regulator to a fully charged SCUBA cylinder and slowly open the cylinder valve.
8. Check for proper demand function and purge operation listen for the sounds of air leaks. Perform accessory checks as necessary for the equipment in use.

## Post Dive Maintenance

1. Secure the cylinder valve, depressurize the regulator assembly and remove it from the cylinder.
2. Whenever the Regulator is removed from the SCUBA Cylinder, the Dust Cap should be dried and installed over the First Stage Inlet Port. It is very important to dry the Dust Cap to prevent water from the cap from entering the First Stage. Screw the regulator yoke screw down until snug and the rubber dust cap is slightly compressed.
3. At a minimum, the entire regulator should be thoroughly rinsed with fresh clean water after every dive. Mild hand washing type dish soap can be used to remove grime.

### CAUTION

**During rinsing, do not depress the Purge Button on the Second Stage. Pressing the Purge Button can allow water to enter the Inlet Valve.**

4. If possible, the entire regulator should be soaked in fresh warm water, between 70-120 °F, for 15 minutes or longer. Soaking in warm water will remove salt and mineral deposits more effectively than a fresh water rinse alone.
5. **Allow the regulator to dry completely before storage.** Do not leave the regulator sitting in direct sunlight. Shake the second stage to help remove water trapped inside. The cover and diaphragm can be removed to facilitate drying. Clean, oil-free, low-pressure (< 30 psig) (1.8 bar) air can be directed into the first stage sensing holes to help displace water. This is helpful if the regulator is to be packed for travel.
6. Screw the second stage regulator adjustment knob all the way out, away from the second stage body. This will lengthen the life of the regulator seat considerably.

7. **Ensure the regulator is completely dry before storing.** Store only in a clean, cool, dry place.

### **CAUTION**

**Never store the Regulator while still connected to a SCUBA cylinder. This could lead to damage to the regulator, causing it to malfunction, leading to serious injury or death.**

### **WARNING**

**DO NOT carry a SCUBA Cylinder by the Regulator or Hose. This abuse will lead to damage of the Regulator or Hose failure. Hose failure can result in personal injury.**

### **WARNING**

**DO NOT use cleaning solvents on any parts or components of this Regulator. The use of solvents may lead to failure of the Regulator parts.**

### **WARNING**

**NEVER pressurize the First Stage Regulator without having a Second Stage attached.**

## **Scheduled Maintenance**

Do not assume that a Regulator is in good working order because of infrequent use. Prolonged or improper storage can still result in O-ring deterioration or internal corrosion that could result in poor performance.

1. The minimum maintenance suggested for all regulators is an annual inspection/soft goods overhaul by a qualified KMDSI technician. However, regulators that are used more than 20 times a month or under severely harsh environmental conditions should be serviced more often. For example, a regulator used as a rental or for training purposes may require service every two to three months or more. Whenever a regulator has been inactive for longer than three months, it should be carefully inspected and surface function checked prior to use.
2. The first stage sintered filter, located in the yoke assembly, should be visually inspected on a regular basis. If a visual inspection reveals dis-

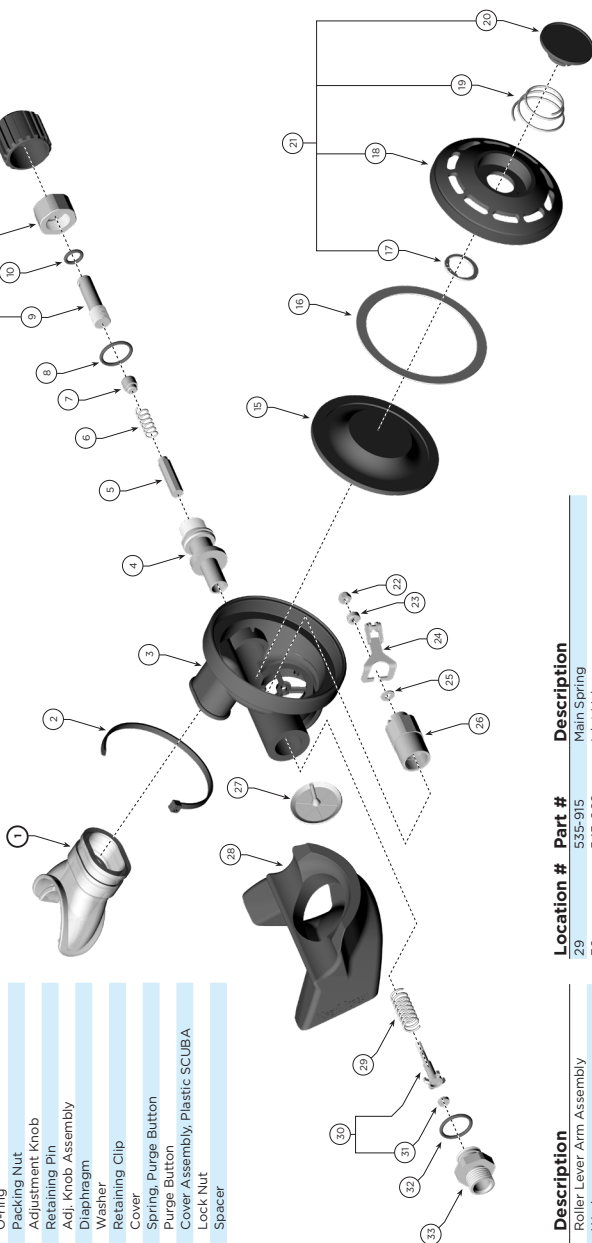
coloration or obvious signs of dirt or corrosion, the regulator should be thoroughly serviced. In addition, the SCUBA cylinders used must be internally inspected and cleaned if necessary.

This page intentionally left blank

# BlowApart: Plastic Adjustable Second Stage SCUBA Regulator P/N 305-166

(See BlowApart online at [www.kirbymorgan.com](http://www.kirbymorgan.com) for a high-res version).

Location #	Part #	Description
1	310-278	SCUBA Mouthpiece
2	520-039	Tie Wrap
3	320-006	Regulator Body Assembly
4	350-205	Adjustment Tube
5	550-098	SCUBA Piston
6	535-910	Spring, Adjustment
7	350-210	Spacer
8	510-016	O-ring
9	350-045	Adjustment Shaft
10	510-011	O-ring
11	350-025	Packing Nut
12	320-035	Adjustment Knob
13	530-601	Retaining Pin
14	305-015	Adj. Knob Assembly
15	510-553	Diaphragm
16	320-030	Washer
17	535-905	Retaining Clip
18	350-075	Cover
19	535-810	Spring, Purge Button
20	520-017	Purge Button
21	305-180	Cover Assembly, Plastic SCUBA
22	530-303	Lock Nut
23	550-052	Spacer

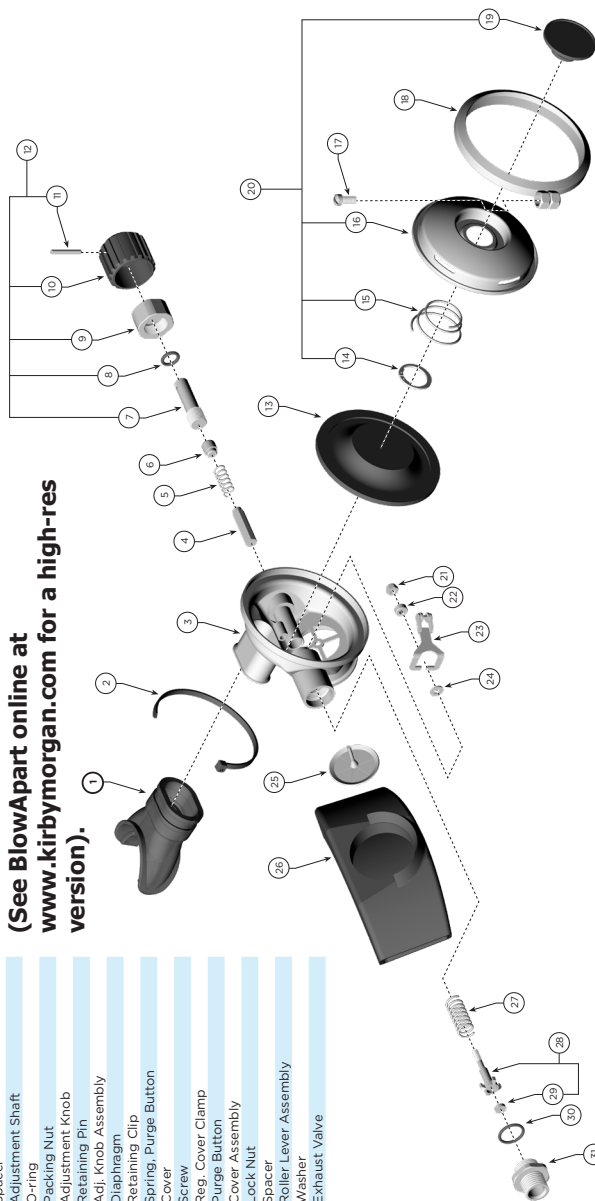


Location #	Part #	Description
29	535-915	Main Spring
30	545-026	Inlet Valve
31	510-580	Seat, Inlet Valve
32	510-014	O-ring
33	350-003	SCUBA Inlet Nipple

Location #	Part #	Description
24	545-038	Roller Lever Arm Assembly
25	530-506	Washer
26	350-200	Inlet Tube
27	510-552	Exhaust Valve
28	310-200	SCUBA Exhaust "T", Hi Flow

# BlowApart: Metal Second Stage SCUBA Regulator P/N 305-175

(See BlowApart online at  
[www.kirbymorgan.com](http://www.kirbymorgan.com) for a high-res  
version).



Location #	Part #	Description
1	310-277	SCUBA Mouthpiece, Standard
2	520-039	Tie Wrap
3	545-028	SCUBA Regulator Body
4	550-098	SCUBA Piston
5	535-910	Spring
6	350-210	Spacer
7	350-045	Adjustment Shaft
8	510-011	O-ring
9	350-025	Packing Nut
10	320-035	Adjustment Knob
11	530-601	Retaining Pin
12	305-015	Adj. Knob Assembly
13	510-553	Diaphragm
14	525-905	Retaining Clip
15	535-810	Spring, Purge Button
16	540-055	Cover
17	550-050	Screw
18	545-020	Reg. Cover Clamp
19	520-017	Purge Button
20	545-018	Cover Assembly
21	530-303	Lock Nut
22	550-052	Spacer
23	545-038	Roller Lever Assembly
24	530-506	Washer
25	510-552	Exhaust Valve

Location #	Part #	Description
26	310-279	Exhaust Valve "1"
27	535-915	Spring
28	545-026	Inlet Valve

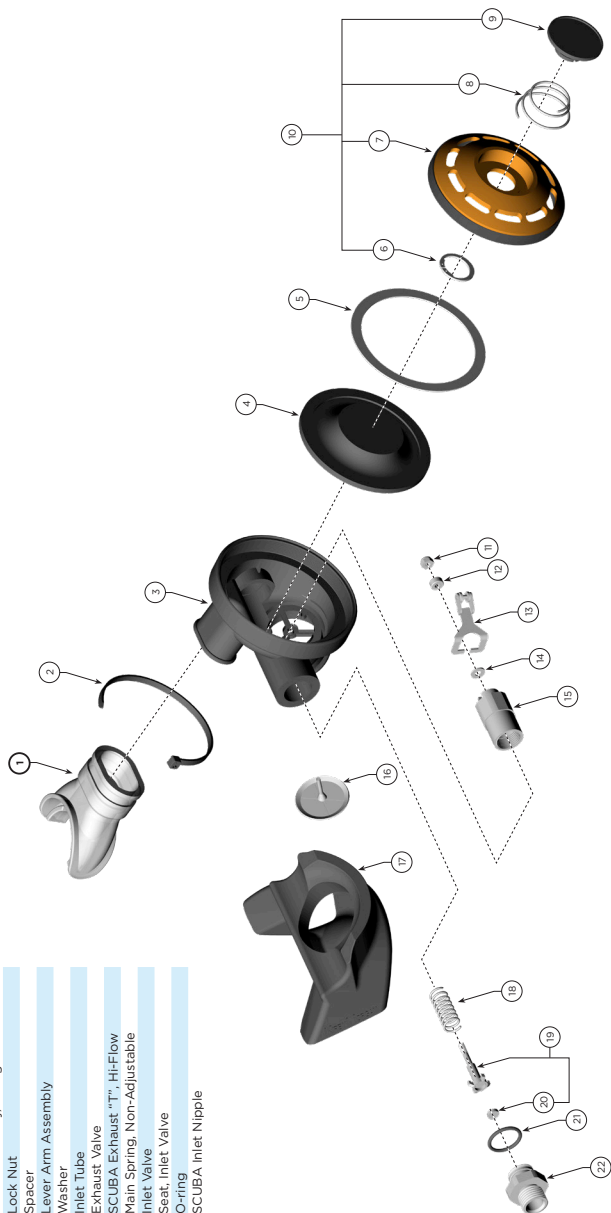
Location #	Part #	Description
29	510-580	Seat, Inlet Valve
30	510-014	O-ring
31	550-046	Inlet Nipple "A"



# BlowApart: Plastic Non-Adjustable Second Stage SCUBA Regulator (Octopus) Part # 305-171

(See BlowApart online at [www.kirbymorgan.com](http://www.kirbymorgan.com) for a high-res version).

Location #	Part #	Description
1	310-278	SCUBA Mouthpiece
2	520-039	Tie Wrap
3	520-007	Regulator Body Assembly
4	510-553	Diaphragm
5	320-030	Washer
6	535-905	Retaining Clip
7	350-095	Cover
8	535-810	Spring, Purge Button
9	520-017	Purge Button
10	305-185	Cover Assembly, Orange
11	530-303	Lock Nut
12	550-052	Spacer
13	545-038	Lever Arm Assembly
14	530-506	Washer
15	350-200	Inlet Tube
16	510-552	Exhaust Valve
17	310-200	SCUBA Exhaust "T", Hi-Flow
18	335-030	Main Spring, Non-Adjustable
19	545-026	Inlet Valve
20	510-580	Seat, Inlet Valve
21	510-014	O-ring
22	350-003	SCUBA Inlet Nipple



## Maintenance Record

[illegible]

This page intentionally left blank



1430 Jason Way, Santa Maria, CA 93455  
Phone: 805/928-7772 Fax: 805/928-0342  
[www.kirbymorgan.com](http://www.kirbymorgan.com) E-mail: [kmdsi@kirbymorgan.com](mailto:kmdsi@kirbymorgan.com)