



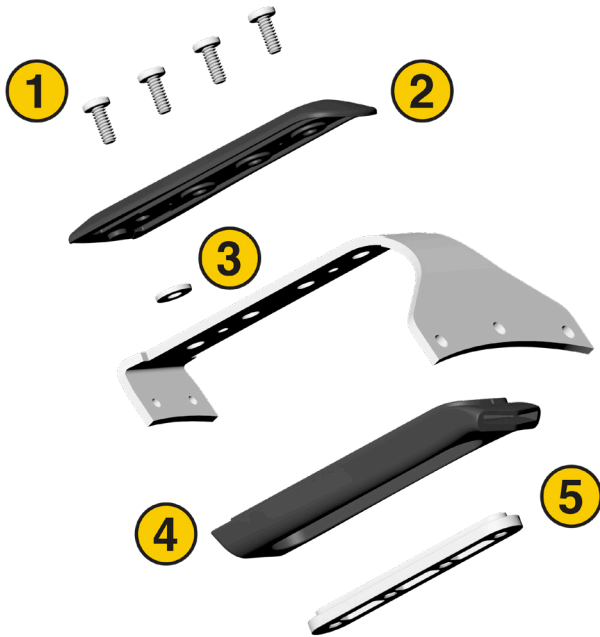
Kirby Morgan Dive Systems, Inc.®

1430 Jason Way Santa Maria, California 93455

Phone: 805/928-7772 Fax: 805/928-0342

www.KirbyMorgan.com email: kmdsi@KirbyMorgan.com

Part #525-715 Stainless Helmet Handle Grip Kit Installation Instructions



| LOC. # | PART # | DESCRIPTION | QTY |
|--------|---------|-------------|-----|
| 1 | 530-078 | Screw | 4 |
| 2 | 520-265 | Top | 1 |
| 3 | 530-527 | Washer | 1 |
| 4 | 510-266 | Grip | 1 |
| 5 | 550-285 | Mount Bar | 1 |

Tools Required:

- Flathead Screwdriver
- Torque Screwdriver with Flathead Attachment
- Loctite® 248 or Equivalent Medium Strength Thread Locker



1) Remove the handle from the helmet. Refer to "1.1.1 Handle Removal On Stainless Steel Helmets" on page SSHNDL-1 of the "Handle on Stainless Steel Helmets" module.



Kirby Morgan Dive Systems, Inc.®

1430 Jason Way Santa Maria, California 93455

Phone: 805/928-7772 Fax: 805/928-0342

www.KirbyMorgan.com email: kmdsi@KirbyMorgan.com



2) Remove the old handle grip from the handle.

3) Carefully stretch the grip onto the handle. Start at the back of the handle and orient the grip so the notch is on top and goes onto the handle first.

4) Slide the grip on until the front is aligned and seated in the “notches” at the back of the handle.



5) Turn the handle over and install the mount bar into the grip.





Kirby Morgan Dive Systems, Inc.®

1430 Jason Way Santa Maria, California 93455

Phone: 805/928-7772 Fax: 805/928-0342

www.KirbyMorgan.com email: kmdsi@KirbyMorgan.com

Ensure that the threaded holes on the mount bar are lined up with the holes on the handle.



6) Turn the handle right side up and place the spacer washer aligned with the last hole on the handle.



7) Install the top portion of the handle grip, ensuring the spacer washer remains aligned with the last hole on the handle. (Ensure the top edges of the grip are fitted into the groove on the underside of the handle top).

Kirby Morgan Dive Systems, Inc.®

1430 Jason Way Santa Maria, California 93455

Phone: 805/928-7772 Fax: 805/928-0342

www.KirbyMorgan.com email: kmdsi@KirbyMorgan.com



8) Apply Loctite® 248 to the screws and install. Torque to 15 Inch Pounds (1.7 Newton Meters).



9) Reinstall the handle onto the helmet. Refer to “1.1.3 Handle Replacement On Stainless Steel Helmets” on page SSHNDL-5 of the “Handle on Stainless Steel Helmets” module.

Camera and Light Bracket Mounting Options



Underside of the handle top indicating where to drill holes (#7, 0.201”) and corresponding holes on the topside of the handle, in order to use the original grip mounting holes in the handle (10-32 UNF Screw).

There are two options for creating holes that can be used for mounting light and camera brackets to the handle:

Option 1, longer screws: to mount a camera or light brackets to the top of the handle, longer screws (10-24 UNC thread) can be used.



NOTE

It is recommended that at least two (2) of the four screw placements be used to mount brackets. Holes are one inch (1”) apart, center to center. Screws not included (10-24 UNC thread).

Option 2, Use the original grip mounting holes: on the under side of the handle top are two indicators of where holes can be drilled with a #7 (0.201”). Drill to allow the original grip mounting holes (10-32 UNF thread in handle) to be used.



NOTE

It is recommended to use both screw placements when mounting brackets. Holes are two inches (2”) apart, center to center. Screws not included (10-32 UNF thread).

