



Kirby Morgan Dive Systems, Inc.

1430 Jason Way, Santa Maria, CA 93455

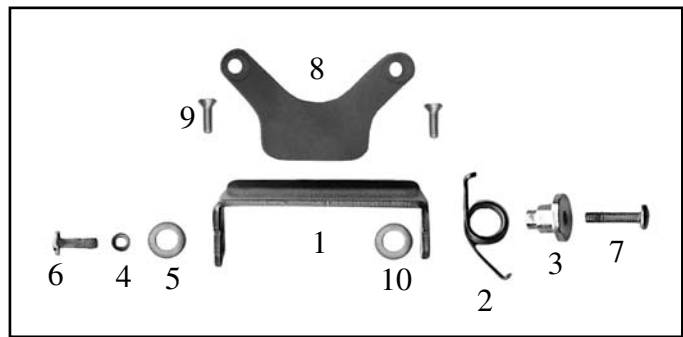
Phone: 805/928-7772 Fax: 805/928-0342

www.kirbymorgan.com Email: info@kirbymorgan.com

525-106 SWING CATCH ASSEMBLY (RETROFIT KIT)

PARTS NEEDED:

1	545-077	Swing Catch
2	535-827	Spring
3	550-122	Spring Spacer
4	550-061	Spacer
5	530-546	Washer
6	530-035	Screw
7	530-045	Screw
8	540-089	Tongue Spacer
9	530-018	Screw (2)
10	520-167	Teflon Washer



TOOLS NEEDED: Screw Driver
Phillips Driver (small)

1. Remove original tongue catch from the helmet neck ring. Remove chin weight.
2. Check swing catch to assure that the Teflon washer is attached to the inside of the catch on the spring attachment end. Take care to not displace this washer.



3. Place swing catch P/N 545-077 in position on neck ring. Bent edge of catch should face in.



4. Use shorter of the two larger screws P/N 530-035, metal washer P/N 530-546 and small spacer, and attach swing catch on the left side of the neck ring.



5. Hook spring P/N 535-827 into notch in swing catch and place in position on end of swing catch.

KIRBY MORGAN[®]
Genuine Parts

Kirby Morgan Dive Systems, Inc.

1430 Jason Way, Santa Maria, CA 93455

Phone: 805/928-7772 Fax: 805/928-0342

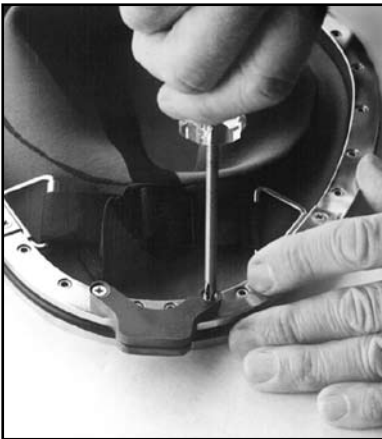
www.kirbymorgan.com Email: info@kirbymorgan.com



6. Insert spring spacer P/N 550-122 and longer screw through spring, swing catch and Teflon spacer, and start screw into thread in the neck ring. Insure free operation of the swing catch before tightening screws.



7. Finish tightening screws. Swing catch should close freely and securely with spring pressure.



8. Use the two small phillips screws to attach tongue spacer to underside of neck step ring. (Tongue catches on older neck rings may be too long and will need to be trimmed to match the new tongue spacer.)



9. Check completed assembly for proper functioning.

Note: It is recommended that a drop of “Loctite 222” or other appropriate thread locking compound be used on all screws.

