



Kirby Morgan Dive Systems, Inc.®

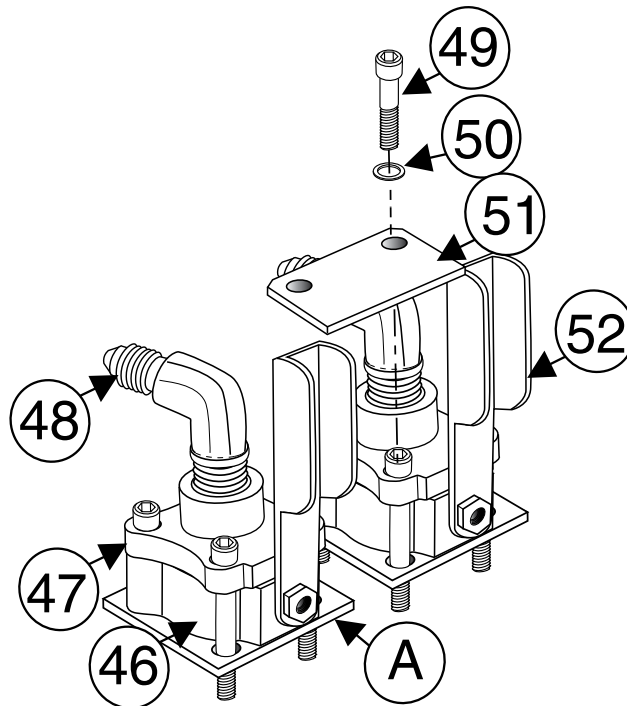
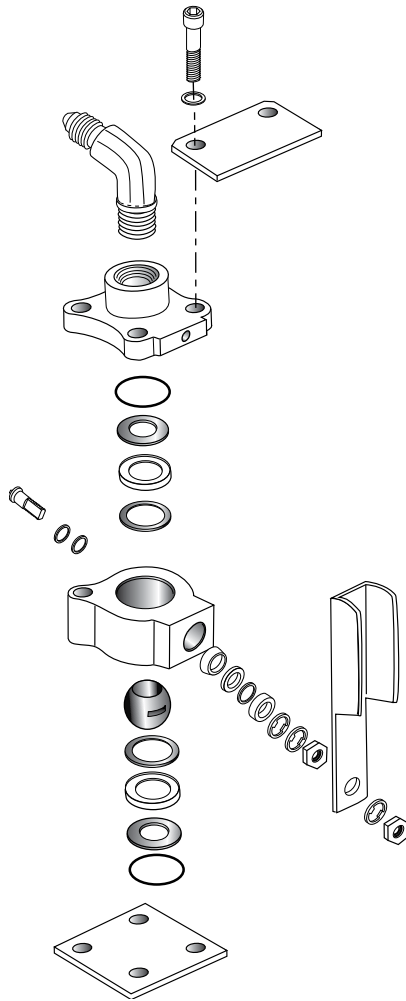
1430 Jason Way Santa Maria, California 93455

Phone: 805/928-7772 Fax: 805/928-0342

www.KirbyMorgan.com email: kmdsi@KirbyMorgan.com

Part # 425-110 DCS-2A SHUT-OFF VALVE KIT

Location #	Part Number	Description	Qty
50	430-134	#10 Flat washer	8
49	430-141	S.S. Screw	8
A	420-106	Plastic plate	2
51	440-210	Handle stop	1
52	440-212	Shut-off handle	2
48	455-143	Elbow	2
46, 47	455-157	Shut-off valve assembly	2



Kirby Morgan Dive Systems, Inc.®

1430 Jason Way Santa Maria, California 93455

Phone: 805/928-7772 Fax: 805/928-0342

www.KirbyMorgan.com email: kmdsi@KirbyMorgan.com



Tools required:
5/32" Allen Wrench

Installation instructions

Procedure:

1. Remove the eight screws and washers (7 & 8), two flanges with the umbilical outlet fittings(14) and the O-rings (15). These parts will not be reused.
2. Clean the top of the manifold block.

Study the blow-apart drawing before proceeding. Once the plastic plate (A) is removed, the valve interior parts can fall out. If this happens replace in the body housing in the order shown. Do the following procedure on one valve at a time.

3. Support the plastic plate (A) on the bottom of the valve and remove the nuts on the attachment screws. Do not remove screws.
4. Place the valve assembly on the manifold block and gently slide out the plastic plate. Remove the screws and replace them with the screws (49) and washers (50) from the kit.
5. Align the new screws with their respective holes and hand tighten. The handle stop (51) is secured by the two inside screws.
6. Tighten all 8 screws to four (4) foot pounds of torque.

