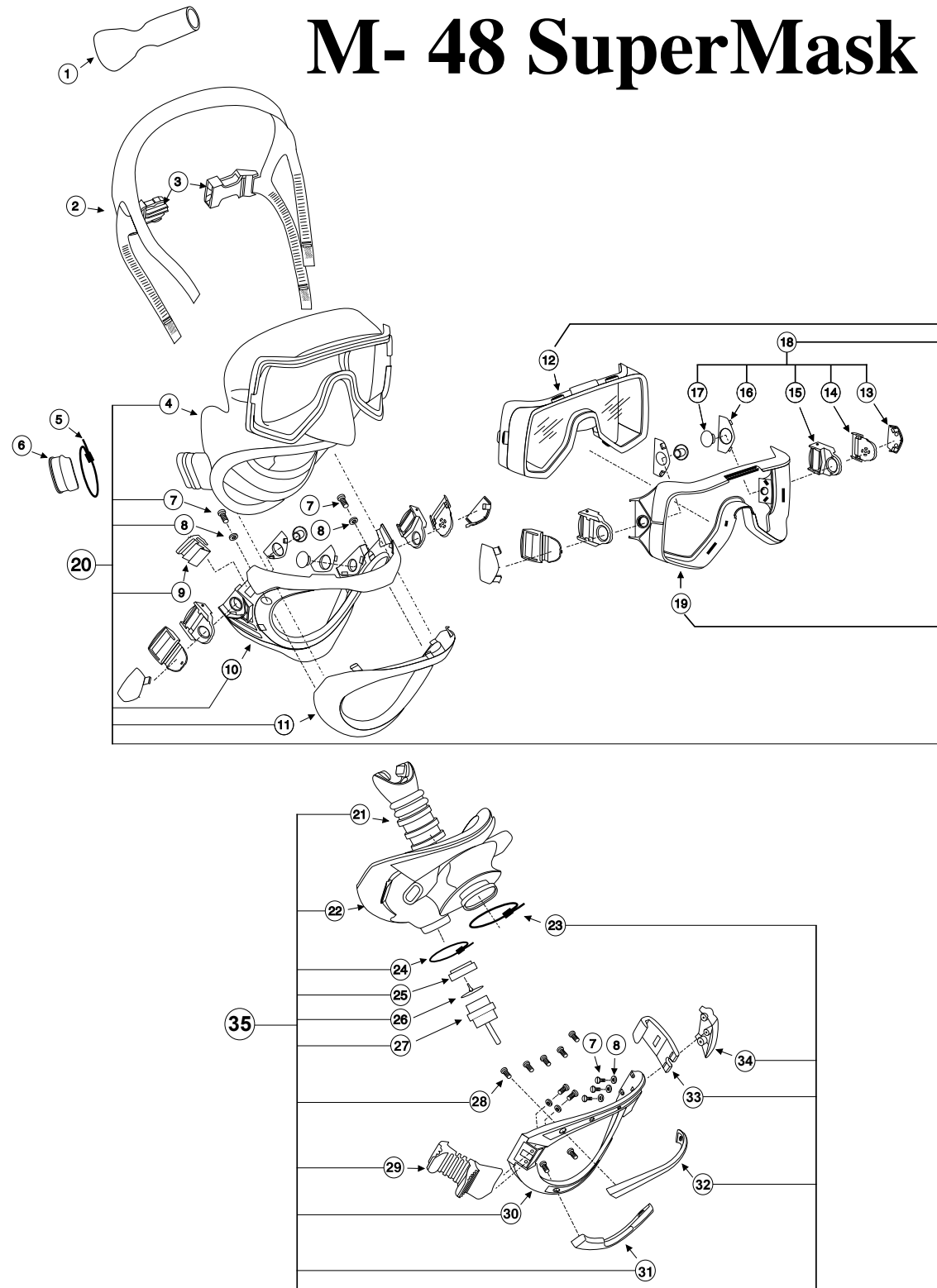


# M- 48 SuperMask



*Note: Not all SuperMask parts are available for purchase.  
 Parts available for purchase are indicated with an asterisk \**

LOC #	PART #	DESCRIPTION
1	810-001	Cushion
2	*805-031	Harness, semi-stretch (includes 1 & 3)
	*805-030	Harness, non-stretch (sold seperately) (includes 1 & 3)
3	805-020	Quick Release
4	810-005	Mask Skirt
5	*520-038	Tie Wrap
6	*820-155	Comm port plug
7	830-005	Screw
8	330-205	Washer
9	820-045	Pod Catch
10	820-035	Jaw Frame
11	820-040	Jaw Frame Retainer
12	865-005	Lens
13		Buckle Cap
14	<i>All Buckles</i>	<i>Order Complete Unit # 18</i> Buckle Catch/Release
15		Buckle Swivel
16		Buckle Cap Retainer
17		Lock Plug
18	*805-005	Buckle Assembly Plastic, SM 48
19	820-050	Lens Retainer
20	*805-010	SuperMask M-48, Mask Only, Black Sides
	*805-010C	SuperMask M-48, Mask Only, Clear Sides
21	*810-022L	Mouthpiece
22	810-100	Pod Cover, SCUBA
23	*520-039	Tie Wrap
24	*520-038	Tie Wrap
25	820-120	Water Dump Valve Body
26	*810-025	Water Dump Valve
27	*805-047	Tilt to Dump Body
28	830-008	Screw
29	*820-105	Pod Catch Release
30	820-100	Pod Frame
31	820-157	Pod Cover Retainer (bottom)
32	820-156	Pod Cover Retainer (top)
33	820-110	Hook
34	820-115	Hook Cover
35	*805-015	SCUBA Pod
	*800-048	Mask Complete (18 & 31) no regulator
	*800-050	Mask Complete (18 & 31) with regulator

### Product Changes

Following publication of this booklet, certain changes in standard equipment, options, prices and the like may have occurred which would not be included in these pages. Your Authorized KMDSI dealer is your best source for up-to-date information on any of these products.

© Kirby Morgan Dive Systems, Inc. reserves the right to change product specifications at any time without incurring obligations.

### ⚠ CAUTION

**Use only Kirby Morgan original replacement parts. The use of other manufacturer's parts will interfere with the performance characteristics of your life support equipment and may jeopardize your safety. Additionally, any substitutions will void any warranties offered by KMDSI. When ordering spares, always insist on Kirby Morgan original parts.**



Kirby Morgan Dive Systems, Inc.® 1430 Jason Way, Santa Maria, CA 93455

Phone: 805/928-7772 Fax: 805/928-0342

[www.KirbyMorgan.com](http://www.KirbyMorgan.com) e-mail: [kmdsi@KirbyMorgan.com](mailto:kmdsi@KirbyMorgan.com)