

SuperFlow® Regulator

Contents

SF-1	1.1 SuperFlow® Demand Regulator	SF-10	1.1.9 Reassembly of the SuperFlow® Demand Regulator
SF-1	1.1.1 General Regulator Information	SF-15	1.1.10 Tuning the SuperFlow® Regulator
SF-2	1.1.2 SuperFlow® Demand Regulator Test for Correct Adjustment, Fully Assembled	SF-17	1.1.11 Important Notes on Regulator Adjustment
SF-2	1.1.3 Inspection of SuperFlow® Regulator Body Interior	SF-18	1.1.12 SuperFlow® Regulator Steady Flows When Pressured Up: Special Tools Used
SF-4	1.1.4 SuperFlow® Demand Regulator Bias Adjustment Servicing, Demand Regulator on the Helmet	SF-19	1.1.13 Regulator Steady Flows When Pressured Up
SF-5	1.1.5 Reassembly of the SuperFlow® Regulator Adjustment System	SF-20	1.1.14 Regulator has Low or No Flow When Pressurized
SF-5	1.1.6 SuperFlow® Demand Regulator Removal from Helmet	SF-20	1.1.15 Unexplained Demand Regulator Free Flow
SF-7	1.1.7 Disassembly of the SuperFlow® Demand Regulator	SF-20	1.2 Water Dump Exhaust Body
SF-8	1.1.8 Inspection of SuperFlow® Demand Regulator Parts	SF-21	1.2.1 Water Dump Valve Removal
		SF-21	1.2.2 Water Dump Valve Replacement
		SF-21	1.2.3 Water Dump Valve Body Removal
		SF-21	1.2.4 Water Dump Valve Body Remounting

1.1 SuperFlow® Demand Regulator

1.1.1 General Regulator Information

While the regulator systems on all Kirby Morgan helmets are simple and highly reliable, the breathing resistance will increase if the demand regulator on your helmet is not maintained or adjusted properly. The demand regulator must receive regular maintenance to assure the best performance possible. However, in the event the demand regulator is damaged, there is always a backup supply of steady flow gas available from the defogger valve.

For the gas inlet valve and adjustment system to

operate properly, the components in the demand regulator **MUST** be in good condition and **MUST** be periodically inspected and adjusted.

Five special tools, the inlet valve holder (P/N 525-616), the regulator adjustment wrench (P/N 525-611), the socket wrench (P/N 525-612), the castle wrench (P/N 525-618), and the regulator mount nut socket wrench (P/N 525-625) should be used to work on the SuperFlow® regulator whenever possible.

Disassembly, assembly, and adjustment can be done without these tools, but the work is much easier and the adjustment is better if these tools are used. The above five tools are available to-

gether along with a tool case. The “Tool Kit with Pouch” is Part #525-620. This kit is included with each new Kirby Morgan helmet that is equipped with the SuperFlow® regulator.



Tool Kit with pouch - Part #525-620.

1.1.2 SuperFlow® Demand Regulator Test for Correct Adjustment, Fully Assembled

To maintain optimum performance of the demand regulator, it should be checked for proper function and adjustment prior to commencement of diving each diving day, in accordance with the KMDSI Daily Set Up and Functional Checklist. See the Dive Lab website (www.divelab.com) for the latest procedures for set-up.

Check the regulator for adjustment and proper function with the assembly complete, and supplied with a breathing gas supply pressure of 135 to 150 p.s.i.g.



135 to 150 p.s.i.g. over ambient is the standard supply pressure to be used when adjusting all KMDSI helmets and band-masks equipped with the SuperFlow® regulator. See “Supply Pressure Requirements & Tables” on page SUPR-1 for recommended pressures during use.



When storing the helmet for any length of time, ensure that the regulator adjustment knob is turned “out” fully counterclockwise to avoid stressing the bias springs. This will prolong the life of both the inlet valve, seat, and bias springs

1) Rotate the regulator adjustment knob in, towards the regulator body.

2) Ensure the supply pressure is connected and properly adjusted to 135 to 150 p.s.i.g.

3) Turn on the gas supply.

4) Rotate the adjustment knob out counterclockwise slowly, until a slight steady flow develops.



The regulator should begin to free flow once the adjustment knob is screwed out several turns.

5) Slowly rotate the adjustment knob in clockwise, until the free flow stops. Lightly depress the purge button several times and ensure the gas flow has stopped.

6) Lightly depress the purge button. There should be between $\frac{1}{16}$ " and $\frac{1}{8}$ " free travel in the button before gas flow starts. When the button is fully depressed, a strong surge of gas must be heard.

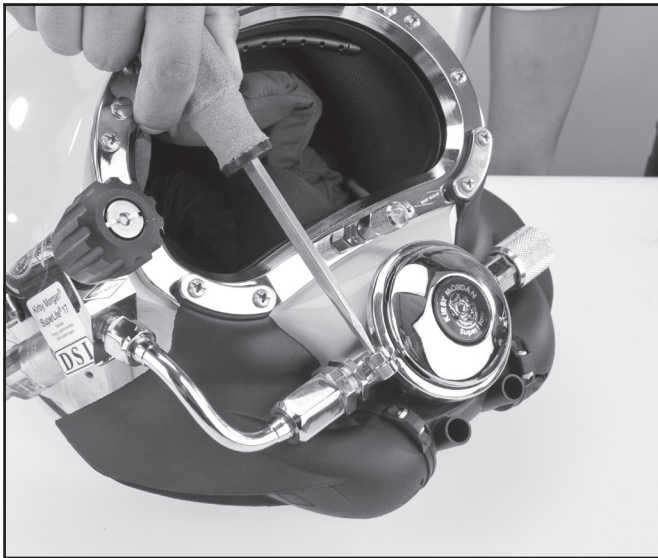
7) If the purge button travels less than $\frac{1}{16}$ " or greater than $\frac{1}{8}$ " before free flow is heard, the demand regulator requires internal adjustment, per "1.1.10 Tuning the SuperFlow® Regulator" on page SF-15.

1.1.3 Inspection of SuperFlow® Regulator Body Interior

Tools required:

- $\frac{1}{4}$ inch Flat Blade Attachment on Torque Screwdriver

1) Remove the demand regulator clamp by removing the clamp screw.



Remove the demand regulator clamp.

2) Lift off the regulator cover and diaphragm.

3) Clean the diaphragm with the soapy solution, per "1.3 General Cleaning & Inspection Procedures" on page GENPRE-4 and wipe dry. Inspect the diaphragm for holes, tears or any signs of deterioration by holding it up to a white

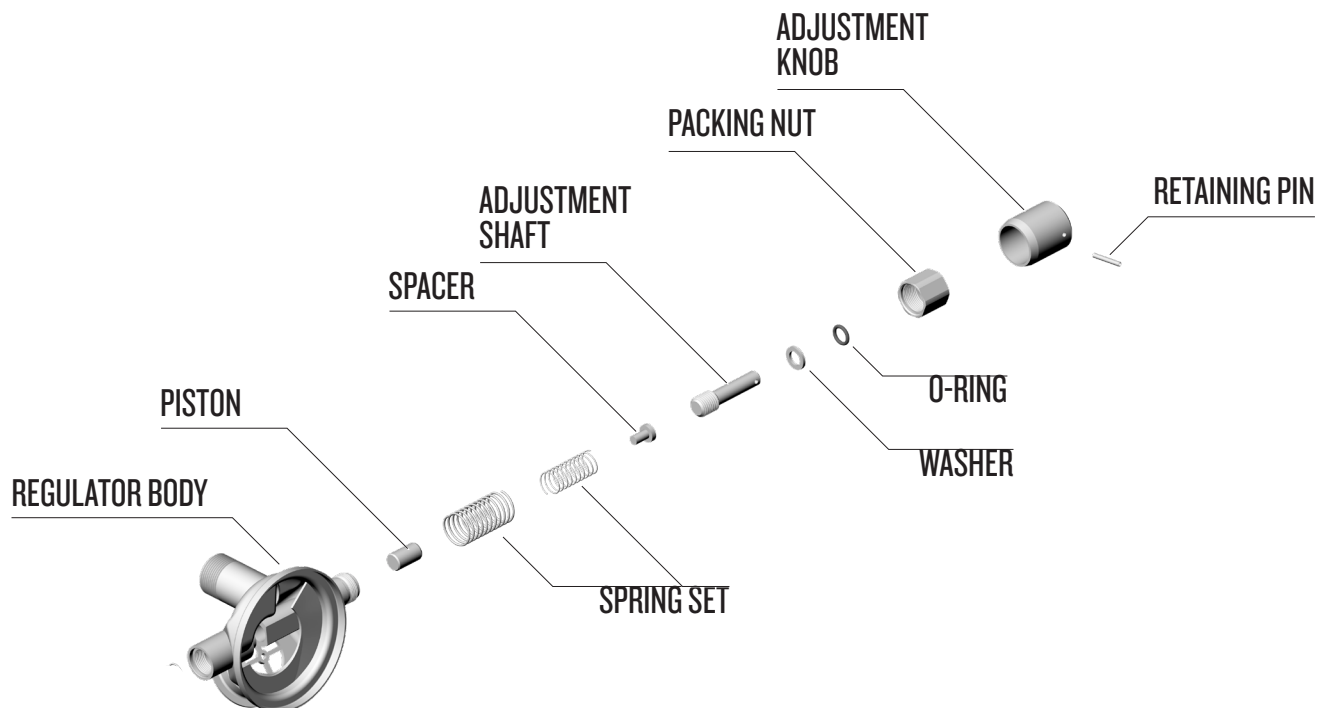
light and stretching and pulling. Check for a good bond between the metal disc and the silicone. Replace the diaphragm if any doubt exists as to its integrity.

⚠ WARNING

Use only replacement diaphragms manufactured by Kirby Morgan. Use of other diaphragms may degrade performance and may cause increased breathing resistance. This can lead to fatigue and the inability to work at full capacity.

4) Inspect the interior of the demand regulator body for damage, corrosion and cleanliness. Clean the interior of the regulator body if necessary.

5) Reinstall the diaphragm, cover, and clamp. Do not lubricate the diaphragm. Torque the clamp screw using a torque screwdriver. See "Torque Specs" module.



The regulator adjustment mechanism on the SuperFlow® regulator.

**NOTE**

Older regulator clamps, when properly torqued, had a gap of approximately $\frac{1}{32}$ " to $\frac{1}{16}$ " between the retaining clamp surfaces when fully tightened. All current clamps, when properly torqued, have little or no gap between the retaining clamp surfaces.

1.1.4 SuperFlow® Demand Regulator Bias Adjustment Servicing, Demand Regulator on the Helmet

**NOTE**

This procedure should be used when replacing the O-ring on the adjustment shaft and/or cleaning and lubricating the shaft threads during field repairs. Start at the adjustment knob end of the regulator.

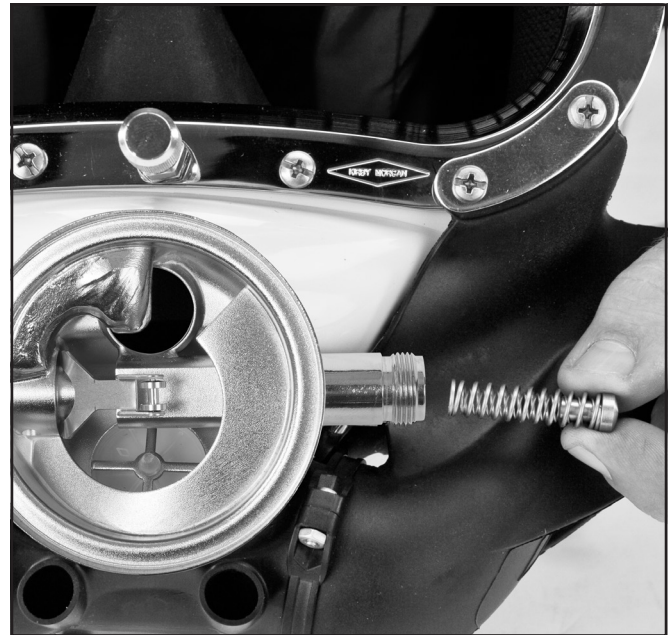
Tools required:

- $\frac{3}{4}$ inch Open-end Wrench Attachment on Torque Wrench
- $\frac{3}{32}$ inch Punch & Small Block of Wood
- Ball-Peen Hammer
- Regulator Adjustment Tool Kit, Part #525-620
- Torque Wrench

1) Unscrew the regulator adjustment knob until it stops. If the knob wobbles as you turn it, or is extremely hard to turn, the shaft is bent and needs to be replaced. Also check the alignment of the tubes in the regulator to make certain they are straight. If not, the regulator body may need to be replaced.

2) Loosen the nut, then rotate the adjustment knob counterclockwise until the adjustment knob and the adjustment shaft are free.

3) Remove the spacer, springs, and piston. At this point the threads can be cleaned and lubricated as well as the adjustment shaft.



Shake out the spacer, spring set, and piston

4) Punch out the retaining pin using a $\frac{3}{32}$ " punch. Use a block of wood with a $\frac{1}{4}$ " hole drilled through it to support the knob. Position the knob so the retaining pin is over the hole. The adjustment knob can be held against the wood block allowing the retaining pin to be driven into the $\frac{1}{4}$ " hole.

5) Remove the adjustment knob, the washer and O-ring.

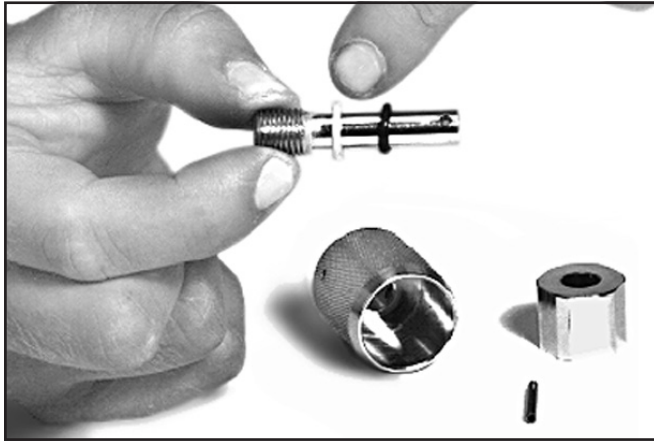
If the spacer and the spring set are stuck, this could indicate corrosion or possible saltwater intrusion into the adjustment tube and assembly, or that the adjustment tube is bent. The demand regulator should be removed from the helmet, cleaned and inspected, per "1.1.6 SuperFlow® Demand Regulator Removal from Helmet" on page SF-5.

**NOTE**

6) Carefully inspect all parts for corrosion, paying particular attention to threaded surfaces and the spring set. Clean and lightly lubricate parts per "1.1.8 Inspection of SuperFlow® Demand Regulator Parts" on page SF-8.

**NOTE**

Carefully inspect the adjustment shaft to ensure it is straight, Check for damaged threads. Replace the adjustment shaft and O-ring if any damage is found.



Inspect the washer and o-ring.

- 7) Replace washer.
- 8) Replace the O-ring.
- 9) Inspect the inside of the adjustment tube on the regulator body to be sure there is no corrosion and the adjustment assembly can travel freely. Ensure the alignment tube is not bent or misaligned from impact, and that the threads are clean.



NOTE

If the inside of the adjustment tube is corroded, this indicates saltwater intrusion into the adjustment tube and assembly. The demand regulator requires removal from the helmet and cleaning per "1.1.6 SuperFlow® Demand Regulator Removal from Helmet" on page SF-5.

1.1.5 Reassembly of the SuperFlow® Regulator Adjustment System

Tools required:

- ¾ inch Open-end Wrench Attachment on Torque Wrench

Silicone lubricant, or oxygen compatible lubricant if used for oxygen service.

- 1) Lightly lubricate the piston and spacer and place the piston back in the regulator adjustment tube, followed by the spring set, and spacer.
- 2) Lightly lubricate the adjustment shaft end and threads, install the washer and the lightly lubricated O-ring onto the adjustment shaft.

3) Slip the packing nut over the adjustment shaft followed by the adjustment knob.

4) Hold the shaft and rotate the knob until the pin holes line up. Use the inlet valve holder from the regulator tool kit to accurately align these holes. Use the punch and wood block as described in previous step 4) on page SF-4 to reassemble. Using a small hammer drive the retaining pin back into place, until it is flush with the surface of the adjustment knob.

5) Screw the adjustment knob assembly clockwise back into the regulator body leaving enough packing nut exposed to place the wrench on.



NOTE

Ensure the adjustment shaft rotates smoothly.

6) Thread the packing nut onto the regulator body and torque with the ¾" torque wrench. See "Torque Specs" module. Turn the knob all the way in and all the way out making sure there is no interference.

1.1.6 SuperFlow® Demand Regulator Removal from Helmet

Tools required:

- Torque Wrench and 1 ¼ inch Socket
- ¼ inch Flat Blade Attachment on Torque Screwdriver
- Torque Wrench and 1¼¹⁶ inch Open-end Attachment
- Torque Wrench and 13¹⁶ inch Open-end Attachment
- Torque Wrench and 7⁸ inch Open-end Attachment
- 7⁸ inch Open-end Wrench
- And/or the 525-625 Regulator Mount Nut Socket Wrench (in P/N 525-620 Tool Kit)

1) To remove the regulator from the helmet, the bent tube should be disconnected first. The bent tube assembly should be loosened at the side block and disconnected from the regulator. It

may now be swiveled out of the way or completely removed.

2) Remove the whiskers from the port retainer by removing the screws. Take care not to lose the spacers, kidney plates or zinc anodes.



Remove the whiskers from the helmet.

3) Remove the nose block device "1.1.3 Face Port and Port Retainer Removal" on page FCPRT-2.

4) Remove the oral nasal mask.

5) The regulator mount nut is removed along with the sealing O-ring. Carefully inspect the surface of the regulator mount nut for corrosion and any possible flaws.



The regulator mount nut must be loosened with a wrench.



Remove the mount nut from the regulator.

6) Cut the tie wrap that connects the regulator body to the Quad-Valve cover.

7) Now the regulator assembly can be pulled out of the helmet.

8) The center section of the Quad or Tri-Valve exhaust assembly, called the Quad or Tri-Valve exhaust main body, has a tie wrap holding it in

place. Remove the tie wrap then stretch the body off the regulator exhaust flange.

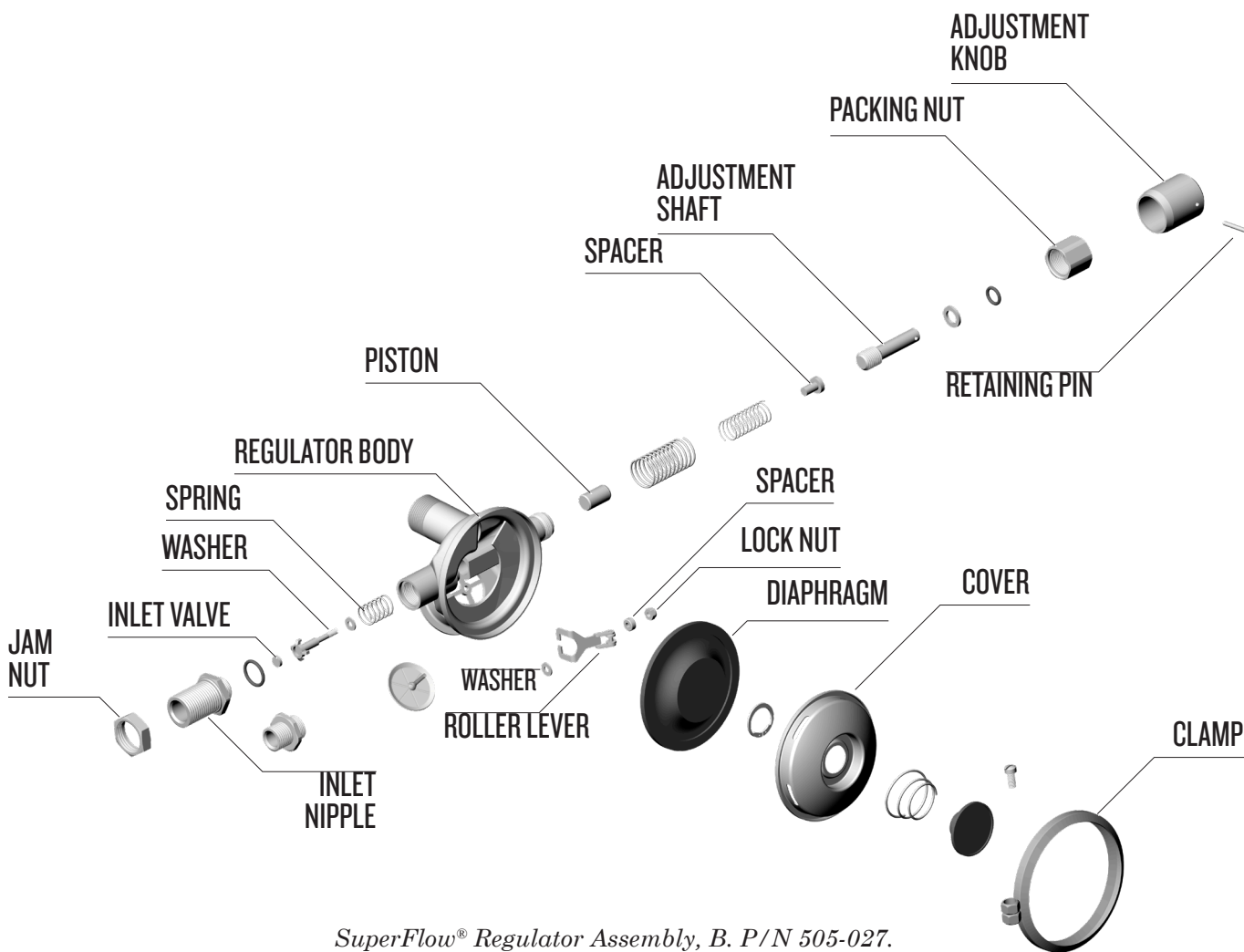
9) Older model double or single exhaust whiskers are removed similarly.

1.1.7 Disassembly of the SuperFlow® Demand Regulator

Tools required:

- ¼ inch Flat Blade Screwdriver on Torque Wrench
- ⅞ inch Open-end Attachment on Torque Wrench
- ¾ inch Open-end Attachment on Torque Wrench
- ⅜ inch Punch ⅞ inch Open-end Wrench
- Small O-ring pick
- Small Ball Peen Hammer

- Sharp Trim Knife (X-ACTO®)
- KMDSI Tool Kit Part #525-620
- Silicone Adhesive, Dow Corning® 732 or equivalent
- Minimum Recommended Replacement Parts for Annual Overhaul:
- Inlet valve Soft Seat 510-580
- Adjustment shaft O-ring 510-011
- Adjustment Shaft Washer 520-032
- Lock Nut 530-303
- Diaphragm 510-553
- Inlet Nipple O-ring 510-014
- Exhaust valve 510-552
- A rebuild kit is available for replacement parts (Part #525-309), or order the "Soft

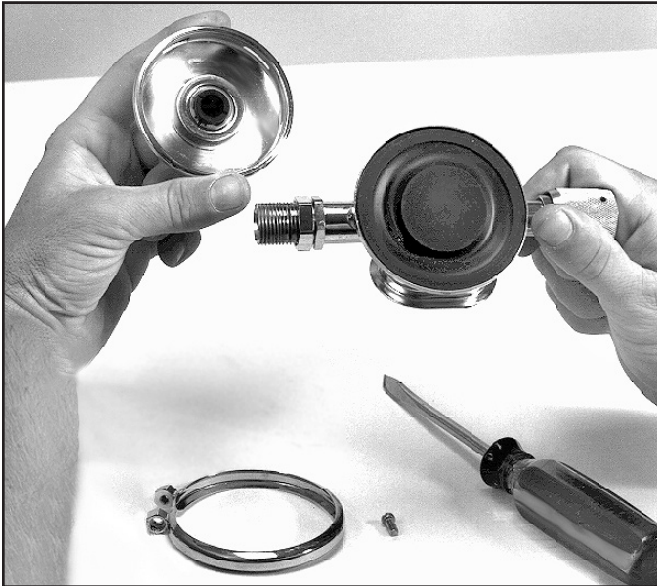


SuperFlow® Regulator Assembly, B. P/N 505-027.

Goods Kit" appropriate for your model helmet/mask.

1) Remove the screw for the regulator cover and clamp.

2) Remove the regulator cover and the diaphragm.



Remove the cover clamp from the regulator.

3) Adjustment knob removal is started by unscrewing the adjustment knob until it stops.

4) The packing nut is now exposed enough to use a wrench on it for removal. As the nut is backed off, also unscrew the knob.

5) The O-ring and washer will remain on the adjustment shaft.

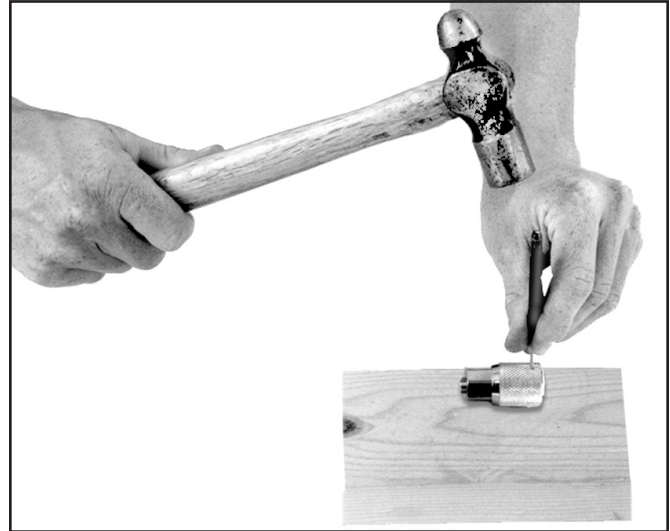
6) Tilt the regulator so that the spacer, spring set, and piston fall out of the adjustment tube of the regulator.

If the spacer and the spring set are stuck, this indicates possible corrosion or saltwater intrusion into the adjustment tube or the adjustment tube may be bent. The demand regulator requires removal from the helmet and cleaning per "1.1.6 SuperFlow® Demand Regulator Removal from Helmet" on page SF-5. This occurs if the helmet is dropped on the adjustment knob or the adjustment knob otherwise impacts against a rigid object. Repairs must be made by a trained KMDSI technician.



NOTE

7) On the adjustment knob, drive out the retaining pin using a $\frac{3}{32}$ " punch. Use a block of wood with a $\frac{1}{4}$ " hole drilled through it to support the knob. Position the knob so the retaining pin is over the hole.



The retaining pin must be driven out with a hammer and punch.

1.1.8 Inspection of SuperFlow® Demand Regulator Parts

After the regulator has been disassembled, clean and inspect all parts. Any parts showing signs of wear, damage or deterioration should be replaced. If this is an annual overhaul KMDSI recommends replacement of the inlet valve seat, lock nut, O-ring on inlet valve, O-ring on adjustment shaft, washer on the adjustment shaft. A rebuild kit is available for replacement parts (Part #525-309), or order the "Soft Goos Kit" appropriate for your model helmet/mask.

If any parts show any signs of damage, deterioration or any damaged threads, the part should be replaced. The lock nut must never be reused. Reuse of the lock nut will not allow the regulator to maintain proper adjustment.

1) **Exhaust valve:** Ensure the silicone exhaust valve shows no signs of damage, brittleness or any deformities. The exhaust valve should lay flat against the seat. If conducting an Annual Overhaul, the exhaust should be replaced. Ensure the seat spokes that hold the exhaust valve

are smooth, even and not bent, and that the chrome plating is intact.



The exhaust valve must be in good condition if you intend to reuse it.

Slight bends in the spokes may be removed by pressing with a thumb. The exhaust valve seating area should be free of dirt and corrosion to ensure the valve can lay flat and seal properly. NEVER lubricate the valve. Lubricating the valve will cause dirt and particles to stick to the

valve and seat causing poor performance and wet breathing.

2) **Inlet valve:** Check the condition of the rubber seat for wear and/or deep grooves. If the orange silicone seat surface is stained to a dark color, this is an indication the air supply that was being used was dirty,

Check the condition of the inlet nipple. The inlet nipple sealing edge must be in good condition, free of nicks, chipped chrome or any damage. If the inlet nipple sealing edge has nicks or missing chrome, the inlet nipple as well as the soft seat will require replacement. During annual overhaul the inlet valve soft seat should be replaced.

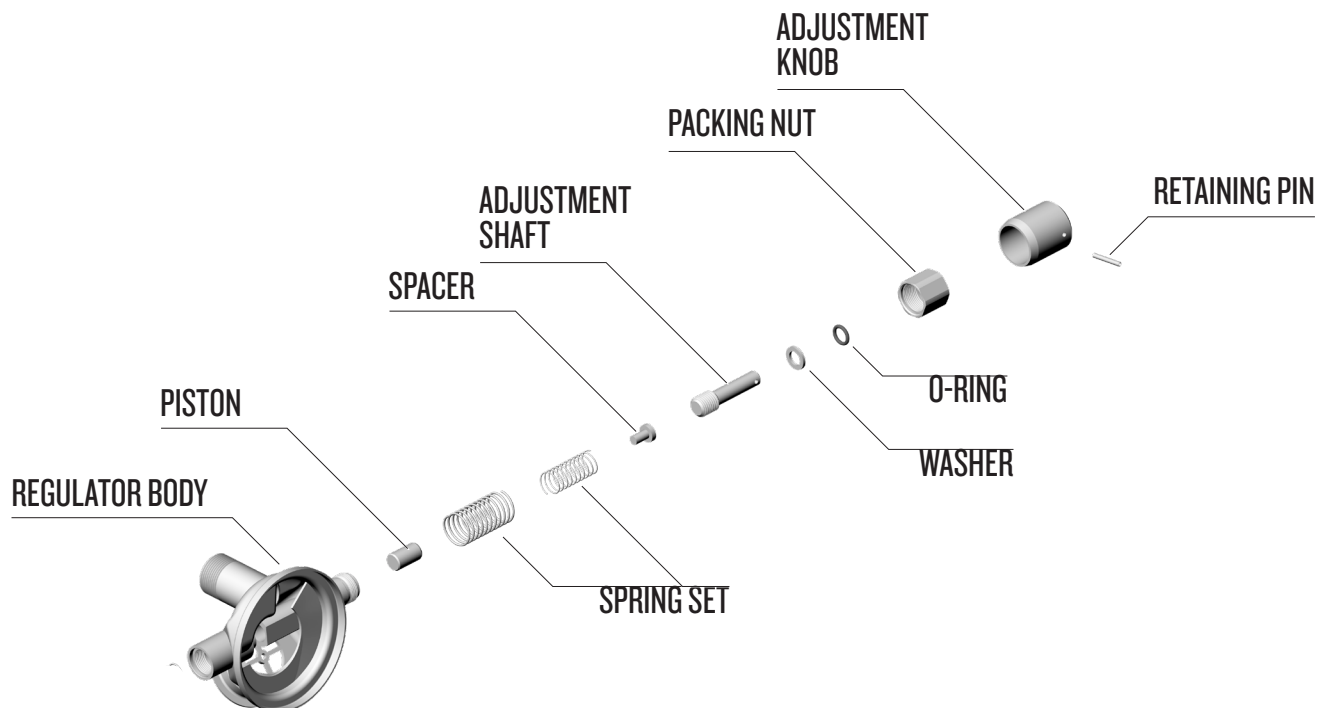
3) **Inlet Valve Soft Seat Replacement:** To replace the soft seat use a small screwdriver or O-ring pick to pry the soft seat from the chrome plated brass valve body. Using a sewing needle clean all old silicone sealant from the vent hole in the bottom of the cup area, and from the cupped area itself.



NOTE

Replace the entire inlet valve if any chrome is missing or if the shaft is bent or thread damage is present.

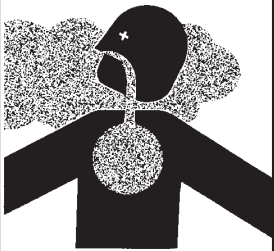
4) Dab a small amount of silicone adhesive Dow



Adjustment end of the SuperFlow® regulator.

Corning® 732 or equivalent on one side of the new soft seat then press the seat into the cup area of the inlet valve assembly then using a clean cloth, wipe all excess silicone from the valve assembly.

⚠ WARNING



Use silicone sealant in a well ventilated area. Do not breathe the fumes from uncured silicone sealant. These fumes are dangerous and can cause unconsciousness. They can also cause long term damage to body tissue. Read and follow all precautions listed on the silicone sealant tube and Material Safety Data Sheet.

5) **Diaphragm:** Check to determine if rubber has separated from the metal disc. Hold the diaphragm to a bright white light, while aggressively pulling and stretching to reveal damage, deterioration, or holes.

Diaphragms showing any indication of damage should be replaced. The diaphragm should always be replaced during scheduled annual overhauls.

6) Inspect the whisker wings. Replace the whisker wings if they show signs of wear, aging or any damage.

The current whiskers used in the Quad-Valve and Tri-Valve exhaust systems are much more rugged than the early latex double exhaust system, and will give a much longer service life and provide better breathing performance at depth. Early double exhaust systems should be replaced with the current Quad-Valve exhaust system, or Tri-Valve for the SL 27®.

7) **Regulator cover:** As a general guideline dents in the regulator cover should not exceed 1/8"/3.2 mm.

Additional guidance on when a SuperFlow® regulator cover may need to be replaced.

- Sharp dents may require cover replacement even if they do not exceed 1/8"/3.2 mm
- Dents that deform the regulator cover slots. These slots are critical for proper regulator function.
- Dents next to the purge button which prevent smooth operation of the button
- Old regulator covers that appear rippled and thin from long term use.
- If there's any doubt about the integrity of the cover it should be replaced.

1.1.9 Reassembly of the SuperFlow® Demand Regulator

1) Install the new exhaust valve into the regulator and trim off any excess stem that may interfere with the movement of the lever or inlet valve.



Trim any excess exhaust valve stem from the interior of the regulator.

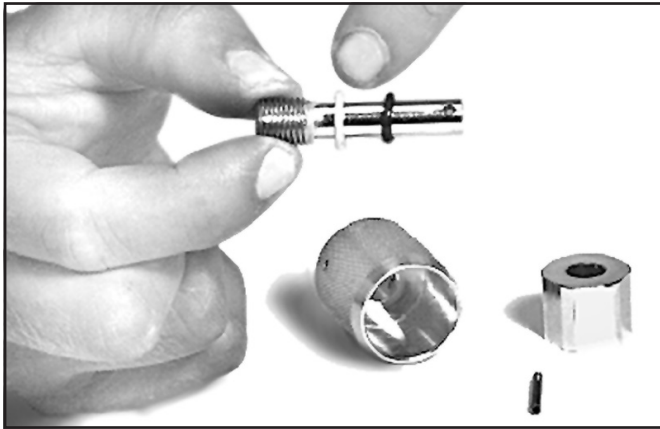
⚠ CAUTION

Be sure the washer and spacer installed on the inlet valve shaft are installed in the correct sequence. If they are not, the regulator will not perform properly.

2) Install the spring and washer on the inlet valve.

3) Press the head of the inlet valve into the castle

wrench (Part #525-618). Place the spring and washer on the inlet valve shaft then insert it into the inlet tube in the regulator body.



Make sure the washer and o-ring are properly installed on the adjustment shaft.

4) Push in on the castle wrench, compressing the spring while forcing the threaded portion of the shaft stem into the interior of the regulator body. Place the washer and the spacer over the end of the inlet valve stem.

As an alternate procedure, the washer and spacer may be placed in the recess in the inside of the regulator body before inserting the inlet valve stem.

5) Using the socket wrench from the tool kit, run the lock nut onto the inlet valve stem approximately 1 ½ to 2 turns, leaving enough slack to allow installation of the lever. With the inlet valve pressed in, the washer and spacer must be loose on the inlet valve stem so that the lever can be installed.

6) Check the roller lever. The lever legs **MUST** be parallel to each other and free of any nicks or burrs. Check them with a straight edge and align them if necessary by carefully bending them with pliers. With the inlet valve stem depressed into the regulator body, insert the lever feet between the washer and spacer then release the pressure on the inlet valve.

7) Hold the inlet valve with the castle wrench so that it cannot rotate, tighten the nut until three threads are visible past the nut. This will be acceptable for initial set up.

8) While holding the lever down, install the inlet nipple with its O-ring on into the regulator body. Using the torque wrench, torque the inlet nipple. See "Torque Specs" module.

9) Lightly lubricate the piston and spacer. Install the piston, spring set and spacer into the adjustment tube of the regulator body, sequence as shown in the blow-apart drawing.

10) Reassemble the adjustment knob assembly; lightly lubricate the new O-ring then install the new washer and O-ring on the adjustment shaft.

11) Slide the packing nut onto the adjustment shaft, then slip the knob onto the end of the shaft. Hold the shaft and rotate the knob until the pinholes line up.

Use the inlet valve holder from the regulator tool kit to accurately align these holes.

12) Install the retaining pin by tapping it in with a small hammer until it is flush with the outer surface of the knob.

13) Lightly lubricate the shaft end and the threads with the appropriate lubricant. Thread the adjustment shaft clockwise, using the adjustment knob, into the tube until the packing nut can be started.

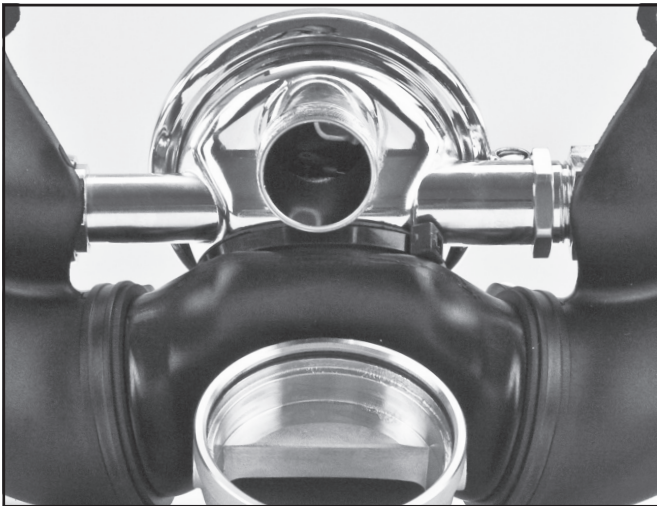
Back out the adjustment knob once the packing nut is engaged on the demand regulator body to access the packing nut with the torque wrench. Using a torque wrench, torque the packing nut. See "Torque Specs" module.

14) Rotate the adjustment knob in i.e, clockwise, several turns, then recheck the torque one more time. Ensure the adjustment shaft rotates smoothly and there is no binding.



The adjustment assembly must turn freely.

15) Stretch the Quad-Valve main exhaust body onto the exhaust flange of the regulator. (Installation of the Quad-Valve is covered in greater detail in "Quad Valve and Tri-Valve® Exhaust" on page QUAD-1.) Rotate as needed so the port and starboard whiskers can be installed.



The Quad-Valve™ must be properly connected to the regulator and the quad exhaust cover.

Next, place the exhaust valves into the exhaust valve inserts. Then place the assemblies into the main body. Install the port and starboard whiskers onto the main body and make sure the alignment is correct. Then install the whisker clamps.

16) For the old double exhaust or single exhaust, stretch the exhaust whisker onto the exhaust flange of the regulator.

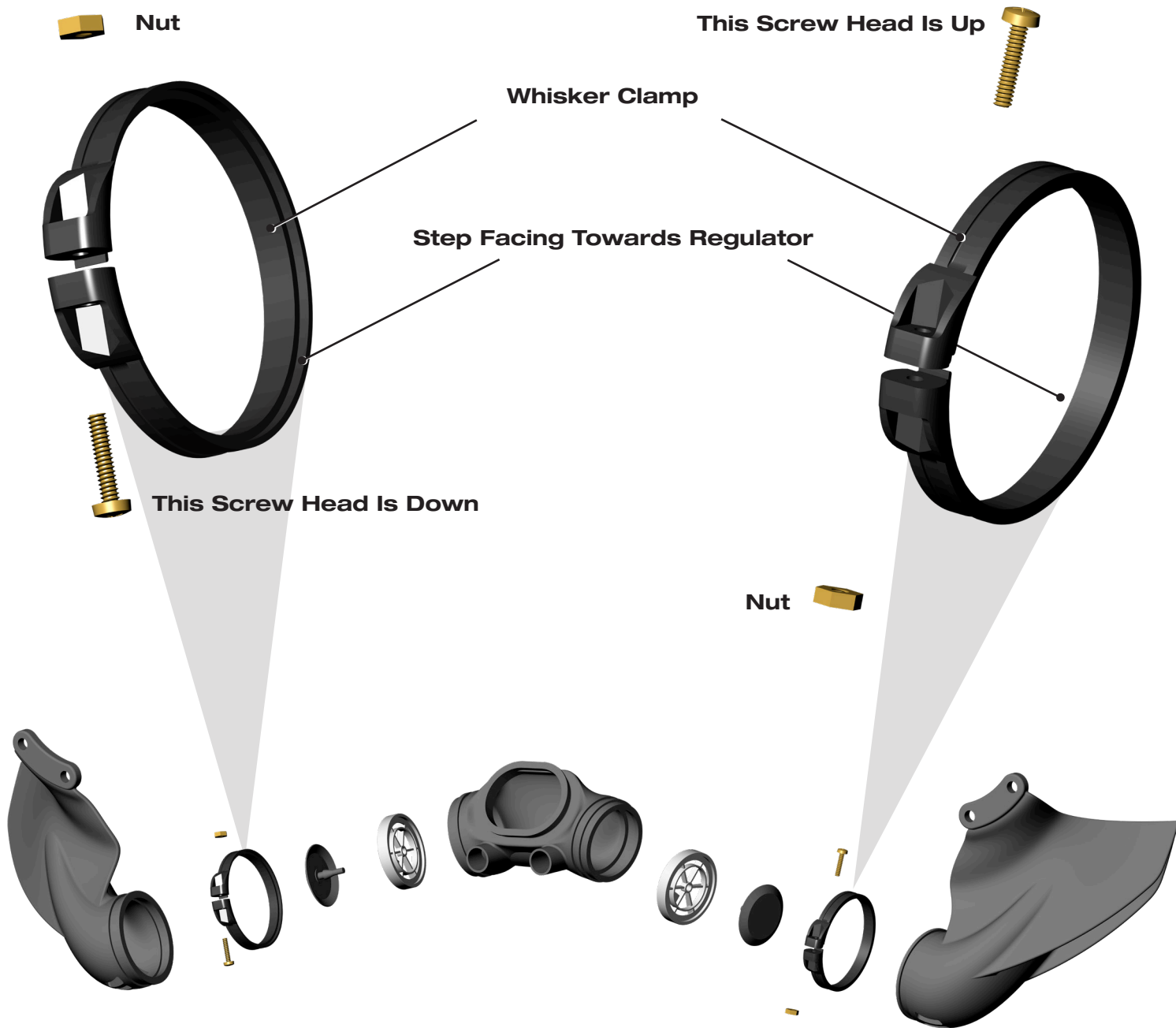
17) Mount the regulator to the mask or helmet.

Inspect the regulator mount nut for contaminants and damage. Use a tooth brush to clean threads as needed. Lightly lubricate the regulator mounting tube threads and the sealing O-ring with Christo-Lube®.



18) Install the sealing O-ring, then thread the regulator mount nut onto the regulator, finger tight ONLY.

19) If you have the 17B, install the bent tube assembly before tightening the regulator mount nut. If you have the 17A, you can attach the hose assembly last.



Whisker Assembly Details

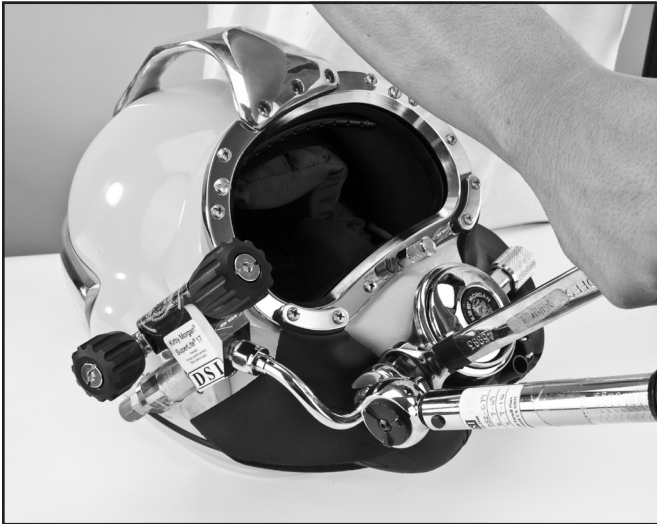


Special note on whisker clamps:
There is no left or right whisker clamp. Both clamps are identical.

If the clamps are not oriented correctly, it will be very difficult to tighten the screws that secure them. There is also a good possibility that the clamp will come off of the whisker, reducing the effectiveness of the exhaust system in keeping the breathing system dry.

⚠ WARNING

If the whisker clamps are not installed properly, the exhaust valves will leak. This leads to a chance of backflow into the regulator through the exhaust valve. In contaminated water diving, this is a serious emergency.



The jam nut and bent tube must be tightened to the proper torque specification.



NOTE

KMDSI recommends replacement of the hose assembly on the 17A, at least every 2 years even if the condition appears excellent.



NOTE

If this maintenance is during an annual overhaul, replace the Teflon® ring at the side block end of the bent tube and the O-ring at the demand regulator inlet side of the bent tube.

Using the appropriate lubricant, lightly lubricate the O-ring on the bent tube assembly. Slide the O-ring end of the bent tube assembly into the regulator inlet nipple until the side block end is aligned with the threads for the bent tube mount nut.

Rotating clockwise, thread the large nut on the bent tube assembly onto the inlet nipple 1 to 2 threads. Ensure that the Teflon® ring is in place and engage the bent tube nut to the side block fully until it is hand tight. You may need to gently rock the regulator body and/or the bent tube to fully engage side block nut.

Next, fully engage (clockwise) the large nut on the bent tube into the regulator inlet until hand tight. This will ensure the nut is bottomed on the shoulder on the bent tube. Do not tighten further. Loosen the jam nut on the regulator inlet (counterclockwise), and engage the jam nut fully to the large nut on the bent tube. Using a torque wrench and an $\frac{7}{8}$ " open end wrench hold the large nut on the regulator end of the bent tube and torque the jam nut. See "Torque Specs" module.

20) Ensuring the O-ring is in place, use a torque wrench a 1 $\frac{1}{4}$ " socket and an extension, torque the regulator mount nut. See "Torque Specs" module. Next using a torque wrench with an $\frac{1}{16}$ " adapter, torque the bent tube nut to the side block. See "Torque Specs" module.

21) Attach the whisker wings to each side of the face port retainer using the screws, kidney plates or zinc anodes and spacers. Using a torque wrench with a flat blade screwdriver adapter, carefully torque these. See "Torque Specs" module.



Make sure to replace the whisker spacers when you reinstall the whiskers.



Be sure to tighten the whiskers to their proper torque values.

22) Adjust the regulator following instructions later in "1.1.10 Tuning the SuperFlow® Regulator" on page SF-15.

23) Install the diaphragm, cover, clamp and screw. Tighten the screw to 12 inch pounds using a torque screwdriver.

24) If you have the 17A, connect the hose assembly to the inlet nipple. Torque the nut on the hose with a torque wrench while holding the inlet nipple with a second wrench, to prevent it from turning. See "Torque Specs" module.

25) Check the regulator for proper operation and fine-tune the adjustment if necessary.

1.1.10 Tuning the SuperFlow® Regulator

1) Remove the regulator clamp, cover and diaphragm.

2) Screw the adjustment knob (clockwise) all the way in, towards the regulator body.

3) Pressurize the regulator to between 120-150 p.s.i.g. of supply pressure.

4) Screw the adjustment knob out (counterclockwise) until the regulator starts to free flow, then

screw the adjustment knob in (clockwise) until the free-flow just stops. Depress the lever several times to ensure the free-flow has stopped.

If the free flow does not stop, the lock nut is too tight. If the roller lever is sloppy (loose) the lock nut is too loose.

5) Insert the inlet valve holding tool into the balance hole on the inlet tube. Push forward on the tool to stop the inlet valve stem from turning. Adjust the nut until the freeflow just stops and there is $\frac{1}{16}$ inch (1.5 mm) to $\frac{1}{8}$ inch (3.0 mm) of free play at the end of the lever.



Insert the inlet valve holding tool into the balance hole on the inlet tube.

6) Remove the inlet valve holder tool.

7) Put the diaphragm and cover in place, depressing the cover tightly to simulate a properly tightened clamp.



Push down on the regulator cover to simulate a tightened clamp.

8) Depress the purge button in the center of the cover.



NOTE

(Reference, instructions following) Before bending the lever, double check the adjustments. The lever rarely requires bending. Usually levers require bending only when improperly serviced, or if damaged during disassembly.

9) There must be $\frac{1}{16}$ inch (1.5 mm) to $\frac{1}{8}$ inch (3.0 mm) of free travel before the purge button actuates, resulting in a slight flow of gas. If a slight flow of gas develops with the purge button depressed less than $\frac{1}{16}$ inch (1.5 mm), the lever will require bending down.

If the purge button travels further than a $\frac{1}{8}$ " (3.0 mm) before gas flow starts, the lever will require bending upward.

10) To bend the lever up, remove the lever and carefully place it in a vice. Grip the lever from the side with a pair of long nosed pliers and bend the roller end up with your finger. Bend it only a small amount at a time.

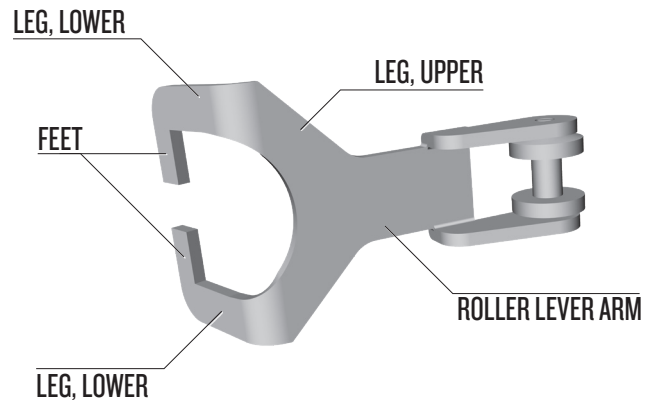


NOTE

Be very careful to not place undue stress on the lower legs of the lever as this will disfigure the feet and cause spongy operation.

⚠ CAUTION

The legs of the lever must be properly aligned in the same plane. If one leg is up and the other is down, the regulator will not perform properly.



Note that the legs of the lever must be properly aligned and in the same plane for the lever to work correctly.

11) To bend the lever down, place the disk end of the KMDSI $\frac{1}{4}$ " wrench onto the flat area of the adjustment tube within the regulator, sliding the disk as far as possible under the lever. With your finger, slightly bend the lever down over the disk to the desired height. Be careful not to bend the lever too far! Bend it slightly, then check it.



Use the disk end of the KMDSI regulator adjustment wrench to bend the lever down.

12) Replace the diaphragm and the cover. Test the purge button. Continue until proper tolerances are reached.

1.1.11 Important Notes on Regulator Adjustment

1) If a new inlet valve or soft seat has been installed, turn the adjustment knob all the way in and allow the regulator to sit for 24 hours. This will allow the soft seat in the inlet valve stem to take a set against the inlet nipple.

If the regulator is to be used immediately, be aware that the rubber seat will take a set, changing the adjustment and performance of the regulator. Readjustment of the regulator will be required after the first day of use.

2) Normally, if the regulator free flows, the lock nut is too tight, and must be loosened until the lever has between 1/16" to 1/8" (1.5-3.0 mm) of free play at the end.

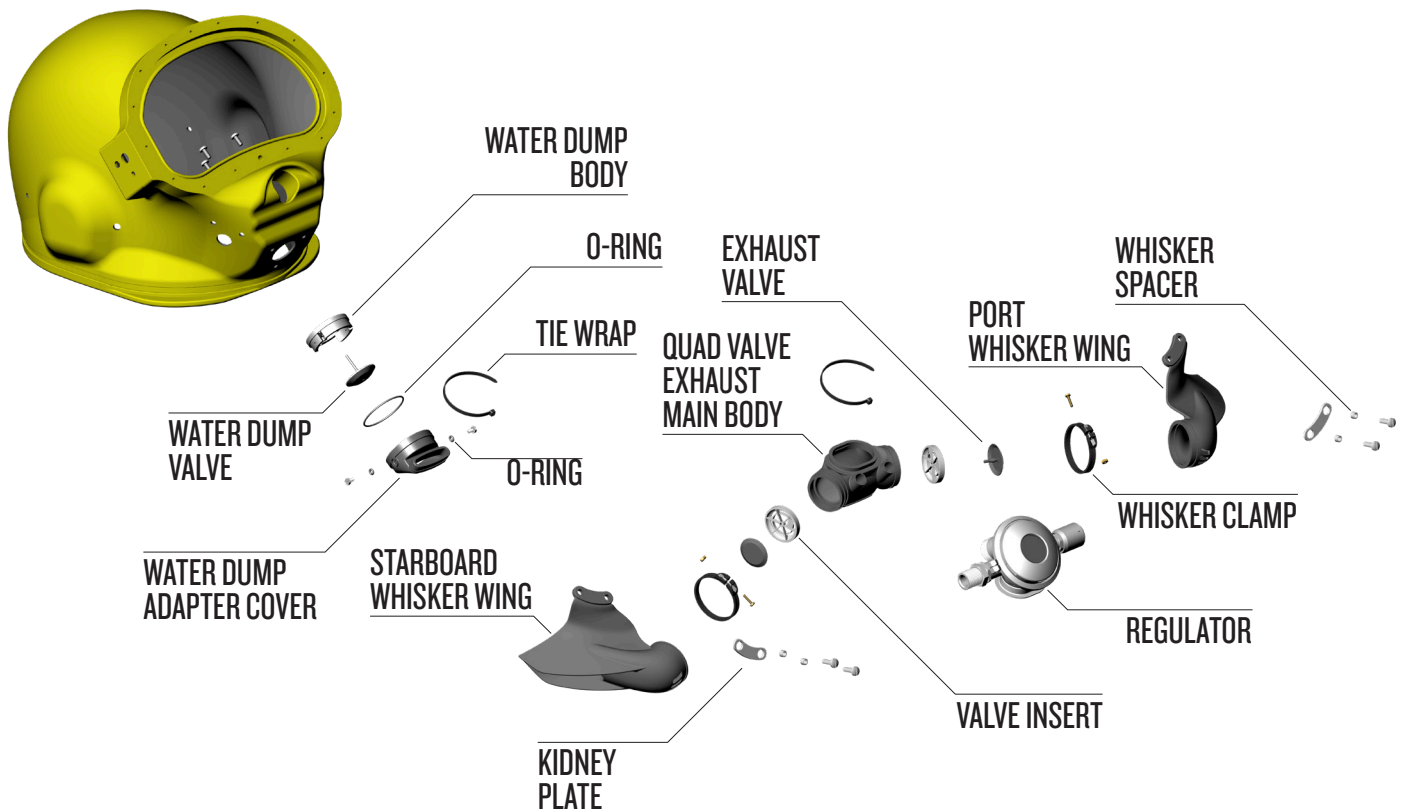
⚠ WARNING

The lock nut must always be replaced if removed from the inlet valve. The plastic material that locks the nut is not designed for multiple reuse. If the nut comes loose during a dive the regulator would free flow heavily. In the situation where the diver is using bottled breathing gas this would result in a rapid consumption of breathing gas.

⚠ CAUTION

The lock nut must not be loosened more than 1/8 turn to lower the height of the lever. If more adjustment is necessary the lever should be bent downward. If the nut is loosened more than 1/8 turn the lever will not have enough travel for proper flow rates.

3) If the regulator continues to free flow after proper adjustment using the correct supply pressure of 135-150 p.s.i.g. (9.3-10.1 bar), both the inlet valve soft seat and/or the inlet nipple must be inspected for damage. Generally, if the inlet nipple has missing chrome or a bent or damaged



Components of the SuperLite® 17's Quad Valve exhaust system.

sealing edge, the soft seat may not make a proper seal and may also be damaged. Replacement of both the inlet nipple and the soft seat is strongly recommended under these conditions.

1.1.12 SuperFlow® Regulator Steady Flows When Pressured Up: Special Tools Used

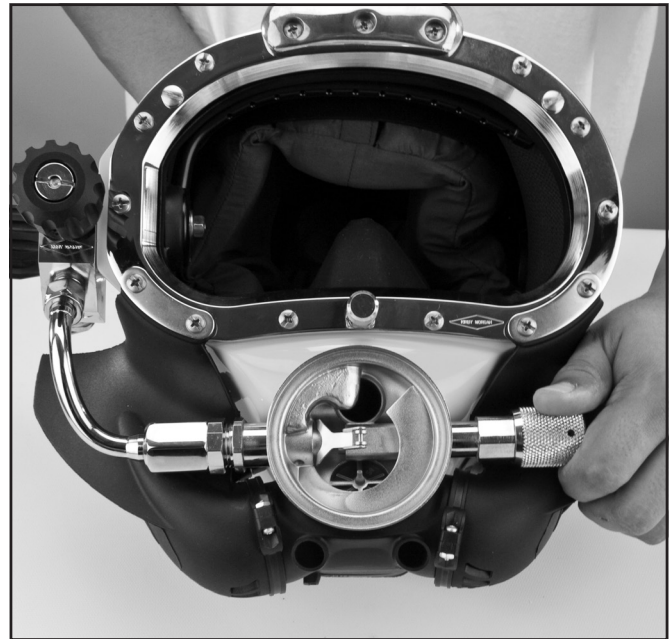
Tools required:

- Small Flat Blade Screwdriver.
- Small Jewelers Screwdriver or Metal Scribe.
- Needle Nose Pliers.
- Kmdsi Regulator Tool Kit P/N 525-620 if Available.

The demand regulator is rugged and reliable. However, to maintain optimum performance it should be checked prior to each diving day in accordance with the brief procedure "1.1.2 SuperFlow® Demand Regulator Test for Correct Adjustment, Fully Assembled" on page SF-2.

If after completing the demand regulator test as outlined in "1.1.10 Tuning the SuperFlow® Regulator" on page SF-15, adjustment is necessary and the KMDSI P/N 525-620 tool kit is not available proceed as follows:

- 1) Remove the regulator clamp, cover and diaphragm.
- 2) Adjust the regulator adjustment knob all the way in. Finger tight only.
- 3) Pressurize the regulator to between 120-150 p.s.i.g. (8.5-10 bar).
- 4) If the regulator is not free flowing, slowly back out on the adjustment knob until a slight free flow is heard and then rotate the adjustment knob in (clockwise) 1/4 turn and depress the purge button momentarily. Repeat this procedure until the gas flow stops.



If the regulator free flows, you will need to remove the cover to make adjustments.

Usually at this point the regulator adjustment knob will be between 5 and 7 turns out.



If when backing the adjustment knob out from the full "in" position, the regulator starts free flowing at less than five turns, then this usually indicates insufficient free play at the lever.

There are several issues that could cause the regulator to free flow, even when the adjustment knob is turned all the way in. These are as follows:

- a) The regulator was rebuilt and the lock nut is too tight. If this is the case, the nut must be loosened.
- b) The washer was never removed from the regulator and a second one has accidentally been installed. If this is the case, the second washer must be removed.
- c) The regulator body has never been properly serviced and there is corrosion inside the body, making proper inlet valve travel impossible.
- 5) Check the free play at the lever. The lever should have between 1/16-1/8 inch (1.5-3.0 mm) play. If adjustment is necessary, adjust using the KMDSI tools.

6) KMDSI tools: Using the inlet valve holding tool, (L shaped rod), insert the end of the tool into the balance hole. Lightly apply force by pushing on the tool making it act as a lever to put friction against the inlet valve shaft. At this point, the KMDSI regulator adjustment wrench can be used to rotate the lock nut. Rotate the nut “In” (clockwise) to reduce lever play or “Out” (counter clockwise) to increase lever play.

Only rotate the nut $\frac{1}{8}$ turn at a time. Remove the tools and depress the lever several times after adjusting to ensure the correct play is achieved. It may be necessary to repeat this procedure several times, as the method requires estimating the correct position of the nut.



If there is little (less than $\frac{1}{16}$ inch /1.5 mm) or no lever play, the regulator will free flow. If there is too much free play, (more than $\frac{1}{8}$ inch / 3.0 mm) the regulator will not be capable of full demand flow potential.

7) If the free flow does not stop after this procedure, refer to regulator disassembly and cleaning procedures.

Alternate method: If a KMDSI tool kit is not available, a small jeweler’s screwdriver or metal scribe can be inserted in the slot on the end of the inlet valve to keep it from rotating, and needle nose pliers may be used to rotate the lever nut. Holding the slot of the inlet valve to prevent its rotation, carefully rotate the nut “In” (clockwise to remove lever play and “Out” (counterclockwise) to increase lever play.

Only turn the adjustment nut $\frac{1}{8}$ turn at a time. Depress the lever momentarily after each adjustment and observe the lever play. It may be necessary to complete this procedure several times, as the procedure requires estimating the proper position of the nut. If the regulator free flow did not stop after this procedure, refer to regulator disassembly and cleaning sections of this manual.

8) When adjustment is complete, place the diaphragm and cover in place, and press tightly down on the cover to simulate the action of the clamp.

9) With the cover pressed tight against the diaphragm, if the regulator starts to free flow, the lever may need to be bent down slightly. If the

regulator does not free flow, slowly depress the purge button until a slight free flow develops. The purge button should depress no further than $\frac{1}{8}$ inch (3.0 mm) before the regulator develops a flow.

If the regulator does not develop a slight free flow when the purge button is depressed in $\frac{1}{8}$ inch (3.0 mm), then the lever will require slight upward bending.

Before bending the lever, double check the adjustments. It is rare that the lever requires bending in a regulator that has been in service. Usually levers only require bending in new installations or because of damage during disassembly.

10) Install the clamp and clamp screw. Tighten the screw to the correct torque (see appendix for torque specifications).

11) Again, press on the purge button in the cover. It must have $\frac{1}{16}$ inch (1.5 mm) minimum and $\frac{1}{8}$ inch (3.0 mm) maximum free travel before it contacts the diaphragm. If there is more than $\frac{1}{8}$ inch (3.0 mm) travel, the lever must be bent upward, per "1.1.10 Tuning the SuperFlow® Regulator" on page SF-15. If the button has only slight or no free travel, the lever must be bent down.

12) If the purge button travel is correct, the adjustment is complete.

1.1.13 Regulator Steady Flows When Pressured Up

1) Ensure supply pressure is adjusted between 135-150 p.s.i.g. (9.3-10.3bar).

2) Adjust demand regulator bias adjustment knob clockwise (in) until the free flow stops.



If demand regulator bias adjustment knob is turned fully “in” and gas continues to flow, the demand regulator requires adjustment.

3) Recheck lever play at the purge button ensuring $\frac{1}{16}$ inch (1.5 mm) to $\frac{1}{8}$ inch (3.0 mm) of free travel before the purge button comes in contact with the diaphragm actuating a slight flow of gas. If a slight flow of gas develops with the purge button depressed less than $\frac{1}{16}$ inch (1.5 mm) or

greater than 1/8 inch (3.0 mm) the lever will require adjusting.

1.1.14 Regulator has Low or No Flow When Pressurized

Tools required:

- Regulator Adjustment Tools, (Part #525-620)
- 1/4 inch Flat Blade Attachment on Torque Screwdriver



If there is low or no flow when the regulator is pressurized, and the lever is very loose (travels more than 1/8 inch at the roller end), the nut must be tightened.

1) Adjust demand regulator bias adjustment knob “in”, i.e., clockwise.

2) Ensure supply pressure is adjusted between 135-150 p.s.i.g. (9.3-10.3bar).

3) Back the demand regulator bias adjustment knob out counterclockwise until a slight steady flow develops. Then adjust the knob in clockwise until the free-flow just stops. Depress the lever several times to ensure the regulator is stabilized.

4) Recheck the lever play at the purge button ensuring 1/16 inch (1.5 mm) to 1/8 inch (3.0 mm) of free travel before the purge button comes in contact with the diaphragm actuating a slight flow of gas. If a slight flow of gas develops with the purge button depressed less than 1/16 inch (1.5 mm), the lever will require slightly more play.

If the purge button travels greater than 1/8 inch (3.0 mm), the lever will require a reduction of play by adjusting.

5) Recheck that the gas source pressure is set between 135-150 p.s.i.g. The gas source must be capable of supplying 4.5 a.c.f.m. (127.4 BL/min per diver) at the required over bottom pressures for the depth of the dive.

6) If the preceding steps were satisfactory, check the following helmet/mask parts for foreign debris in the air/gas passages:

a. One-way valve

- b. Side block assembly
1. Steady Flow Valve
 2. Emergency Valve Assembly
 3. Bent Tube Assembly

1.1.15 Unexplained Demand Regulator Free Flow

Any leak in the neck dam when the diver is face down will cause gas to vent out into the water from the inside of the helmet. This causes the demand regulator to steady flow, making up for the vented gas. Even if the adjustment knob is turned in, the leak may continue.

1) One method to check for this is for the diver to place the demand regulator above the neck dam by looking up. Free flow from a leaky neck dam should cease as long as the helmet is in the upright position.

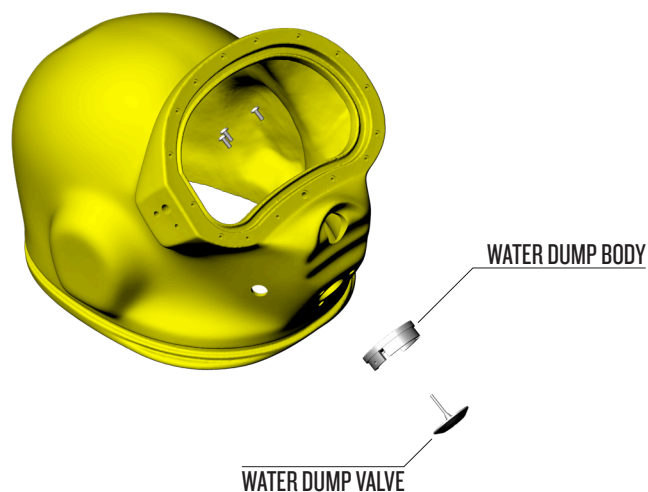
2) Ensure the demand regulator bias adjustment knob is properly adjusted for the supply pressure.

3) During ascent the regulator will free flow if the supply pressure to the helmet is not backed off (topside) or, the diver does not adjust “in” (clockwise), the demand regulator adjustment knob as the diver’s depth and the ambient pressure decreases.

4) If the preceding steps were checked and the demand regulator still steady flows the regulator requires adjustment.

1.2 Water Dump Exhaust Body

The water dump exhaust assembly is mounted onto the bottom of the helmet by three screws that are installed on the inside of the helmet shell. RTV silicone sealant is used to seal the water dump body to the helmet shell.



To remove the water dump body you must remove the three screws inside the helmet shell.

1.2.1 Water Dump Valve Removal

Tools required:

- Flat Blade Screwdriver

1) The Quad-Valve cover (aka water dump adapter cover) can be removed by unscrewing the two screws.



The Quad-Valve™ cover must be removed to inspect the water dump valve.

2) The rubber water dump valve should be replaced at the slightest sign of deterioration or aging of the rubber. Simply grasp the valve and pull to remove.

1.2.2 Water Dump Valve Replacement

1) The rubber water dump valve is installed by inserting the center stem through the water dump body then pulling from the inside of the helmet shell until it snaps into place.

2) When installing the Quad Valve exhaust/water dump adapter cover, be sure **NEVER** to use longer screws. These would protrude into the interior of the exhaust body as this would interfere with the operation of the rubber exhaust valve .

1.2.3 Water Dump Valve Body Removal

1) The water dump body should never need servicing. If it is to be removed, you must first remove the three screws inside the helmet shell.

After this is done, gently twist the valve body off of the helmet shell. A wooden wedge may be used to slide between the valve body and the shell to break the RTV sealant.

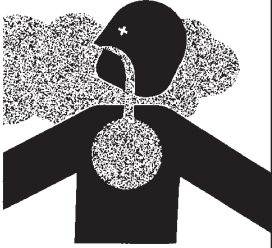
1.2.4 Water Dump Valve Body Remounting

1) To replace the water dump body, first be sure to clean the helmet and the main exhaust body of the old silicone sealant prior to remounting. The cleaning solvent, acetone, is effective for removing silicone from metal parts. Avoid using acetone on the gel coat fiberglass finish, as it may degrade the cosmetic shine.

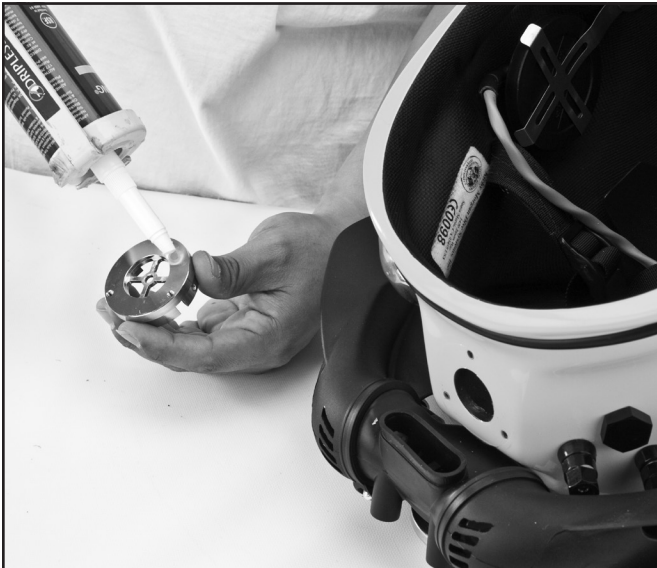
2) You may use mineral spirits to remove silicone sealant from areas of the fiberglass where you wish to preserve the cosmetic finish. Place a rag soaked in mineral spirits on the area for about 20 minutes. This will soften the silicone and allow for removal. The procedure may require repeating for any remaining silicone.

Place a coating of RTV silicone sealant on the mounting surfaces and around the mounting holes, and mate the body to the helmet and start to tighten the mount screws on the interior of the helmet. Wipe off the excess RTV silicone sealant that is squeezed out.

Make sure any excess silicone that may have extruded inward is removed to prevent flow restriction past the valve. Torque the screws. See "Torque Specs" module.

⚠ WARNING

Use silicone sealant in a well ventilated area. Do not breathe the fumes from uncured silicone sealant. These fumes are dangerous and can cause unconsciousness. They can also cause long term damage to body tissue. Read and follow all precautions listed on the silicone sealant tube and Material Safety Data Sheet.



Silicone sealant is used to seal the water dump body to the helmet shell.